

SINCE  
RS  
1927  
RAHEEM & SON  
HANDMADE RUGS

THE CENTENARY COLLECTION · 1927-2027

100 YEARS

LIMITED EDITION · HANDMADE IN BHADOHI

A CENTURY OF MASTERY

# A century, woven.

---

**O**ne hundred years ago, the first loom was dressed in Bhadohi. Since then, every knot has been tied by hand — in silk, in wool, in golden thread — by craftsmen who learned from their fathers, as their fathers learned from theirs. This centenary edition gathers eighteen of the house's most exceptional pieces: singular objects that carry a century of knowledge in their pile, selected to endure for another hundred years.

100 YEARS

# METAL-THREAD & SILK

---

The rarest works in the house — woven in pure silk interlaced with real metallic thread. Under direct light the surface blazes; under ambient light it retreats to a rich, almost lacquered depth. These three pieces represent the absolute summit of Bhadohi craftsmanship.



EBONY / GRAPHITE

# Evadne

---

Worked in metal thread against a deep ebony ground, this piece moves between near-invisible shadow and brilliant relief depending on the angle of light. An exceptional study in restrained darkness.

MATERIALS      Metal Thread & Silk

ORIGIN            Bhadohi, India

SIZES             402 × 293 cm



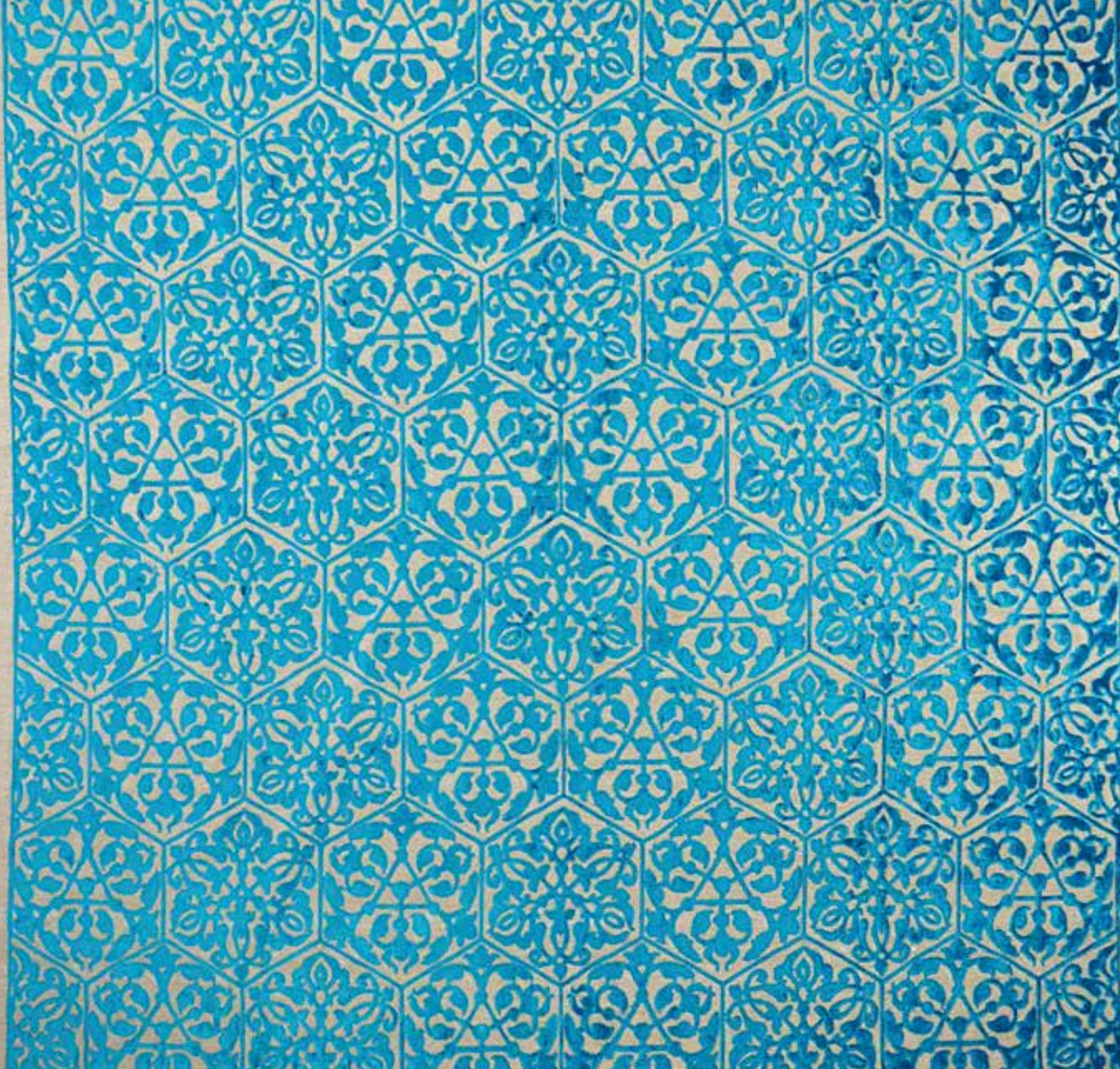
IVORY / GOLDEN

# Galatea

---

Golden thread runs through the pile and surface of this piece, introducing a luminous warmth that silk alone does not possess. The all-over geometric and floral pattern catches and releases light with each degree of shift.

MATERIALS      Metal Thread & Silk  
ORIGIN            Bhadohi, India  
SIZES              288 × 241 cm



TURQUOISE / IVORY / GOLD

# Xanthe

---

A vivid ground of turquoise silk — rare in this form — accepts the shimmer of woven golden thread to produce a surface of extraordinary chromatic intensity. Square proportions give the composition perfect balance.

MATERIALS      Metal Thread & Silk

ORIGIN            Bhadohi, India

SIZES              240 × 233 cm



100 YEARS

# HAND-KNOTTED SILK

---

Pure silk on silk foundations — the most luminous hand-knotted construction in existence. Each knot is tied in silk, pile and ground alike, producing a surface that shifts from ivory to gold to rose as the viewing angle changes. These nine pieces span the full mastery of the form.



DARK BROWN / IVORY / GOLD

# Danae

---

A jewel-dark ground of deep brown supports an all-over medallion lattice in ivory and gold. The contrast is stark and deliberate — a piece conceived for rooms with strong architectural character.

MATERIALS     Silk on Silk  
ORIGIN         Bhadohi, India  
SIZES            510 × 338 cm



CHOCOLATE / IVORY

# Cassia

---

A rich chocolate ground provides deep contrast for ivory arabesques worked in silk relief. The pile's cut height varies subtly across the surface to emphasise key motifs, a technique that animates the pattern in raking light.

MATERIALS	Silk on Silk
ORIGIN	Bhadohi, India
SIZES	450 × 350 cm



IVORY / WARM GOLD / BLUSH

# Semele

---

A room-defining silk of immense clarity: the large central medallion is framed by a meticulously balanced field of floral arabesques in warm gold and ivory. The outer border uses a contrasting vine scroll to complete the frame.

MATERIALS      Silk on Silk  
ORIGIN            Bhadohi, India  
SIZES              690 × 490 cm



RED / IVORY / BLUE MEDALLION

# Aurelia

---

A commanding room-scale silk built around a deep crimson field and a blue central medallion. The bilateral symmetry is precise across its full 8-metre length, a testament to the skill of the master weavers.

MATERIALS      Silk on Silk  
ORIGIN            Bhadohi, India  
SIZES              837 × 505 cm



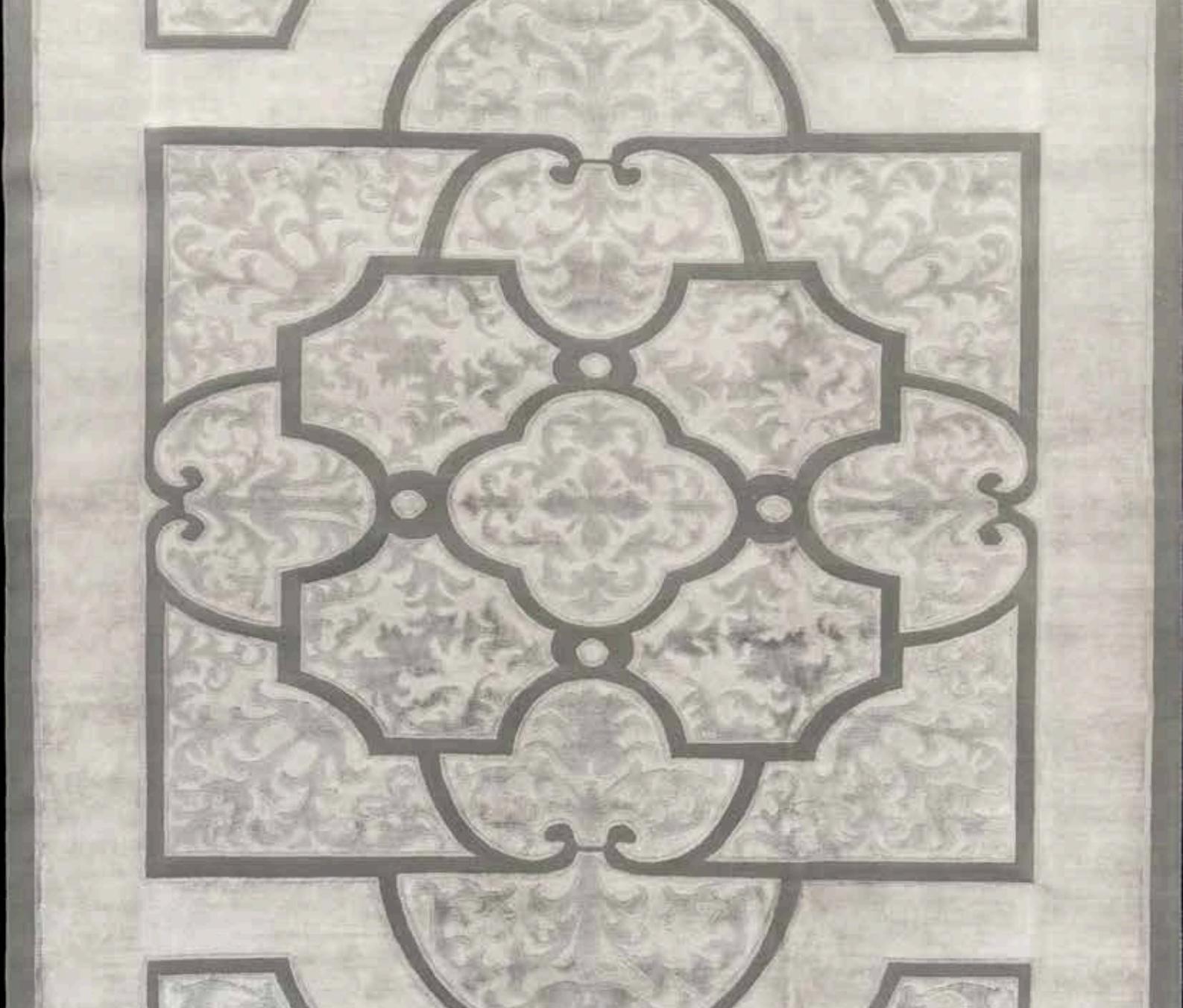
CHAMPAGNE / CAFÉ AU LAIT

# Ophelia

---

A grand classical medallion articulated in champagne silk, its interlaced scrollwork rendered in fine knotted relief. The field breathes with restraint while the border asserts an architectural precision rarely achieved at this scale.

MATERIALS	Natural Silk
ORIGIN	Bhadohi, India
SIZES	400 × 300 cm
CONSTRUCTION	Hand-Knotted



CLOUD GREY / SILVER

# Berenice

---

A monumental composition in silver-grey silk and wool, its geometric cartouches framing a carved central field. The lustred relief catches light at an angle, lending the surface an almost architectural solidity.

MATERIALS	Natural Silk & New Zealand Wool
ORIGIN	Bhadohi, India
SIZES	500 × 300 cm
CONSTRUCTION	Hand-Knotted



IVORY / DUSTY ROSE / STEEL BLUE

# Delphi

---

A central medallion of extraordinary intricacy floats on an ivory ground softened by centuries of light. The border's disciplined reciprocal guard draws the eye inward, where every tendril resolves into a faultless bloom.

MATERIALS     Silk on Silk  
ORIGIN         Bhadohi, India  
SIZES            324 × 230 cm



CRIMSON / IVORY / STEEL BLUE

# Mycenae

---

An expansive field of interlaced herati motifs commands attention with a boldness that belies its age. The terracotta reds have mellowed to a warm crimson, while the teal border holds its clarity with quiet authority.

MATERIALS      Silk on Silk  
ORIGIN            Bhadohi, India  
SIZES              351 × 265 cm



IVORY / ROSE / INDIGO

# Nestor

Silk on silk of the highest order: the ground catches light and shifts from pale gold to warm cream as the viewing angle changes. The central medallion reads with jewel-like precision even at room scale.

MATERIALS      Silk on Silk  
ORIGIN            Bhadohi, India  
SIZES              395 × 265 cm



100 YEARS

# ANTIQUE HAND- KNOTTED

---

Each piece in this section carries the unmistakable quality of time — hand-knotted decades or centuries ago, their dyes long settled and their pile worn to a velvet patina that no new rug can replicate. These are not reproductions. Selected for the centenary as objects of living history.



IVORY / TERRACOTTA / TEAL

# Theron

---

One of the grandest pieces in the collection — its scrolling floral lattice retains a warmth that only deepens with age. The ivory ground remains luminous, the border tightly woven and uncompromised.

MATERIALS      New Zealand Wool on Cotton

ORIGIN          Bhadohi, India

SIZES            490 × 370 cm



ANTHRACITE / SILVER

# Cybele

---

Deep graphite grounds an intricate all-over floral field, its silver silk relief shimmering under raking light. A commanding presence that anchors the grandest of rooms without conceding restraint.

MATERIALS      New Zealand Wool & Natural Silk

ORIGIN            Bhadohi, India

SIZES             300 × 250 cm



STEEL BLUE / IVORY

# Maia

---

A midnight-blue ground hosts an exuberant palmette and vine composition whose ivory and silver silk highlights catch the light like frost on dark water. Rich and deeply considered.

MATERIALS      New Zealand Wool & Natural Silk

ORIGIN          Bhadohi, India

SIZES            300 × 250 cm



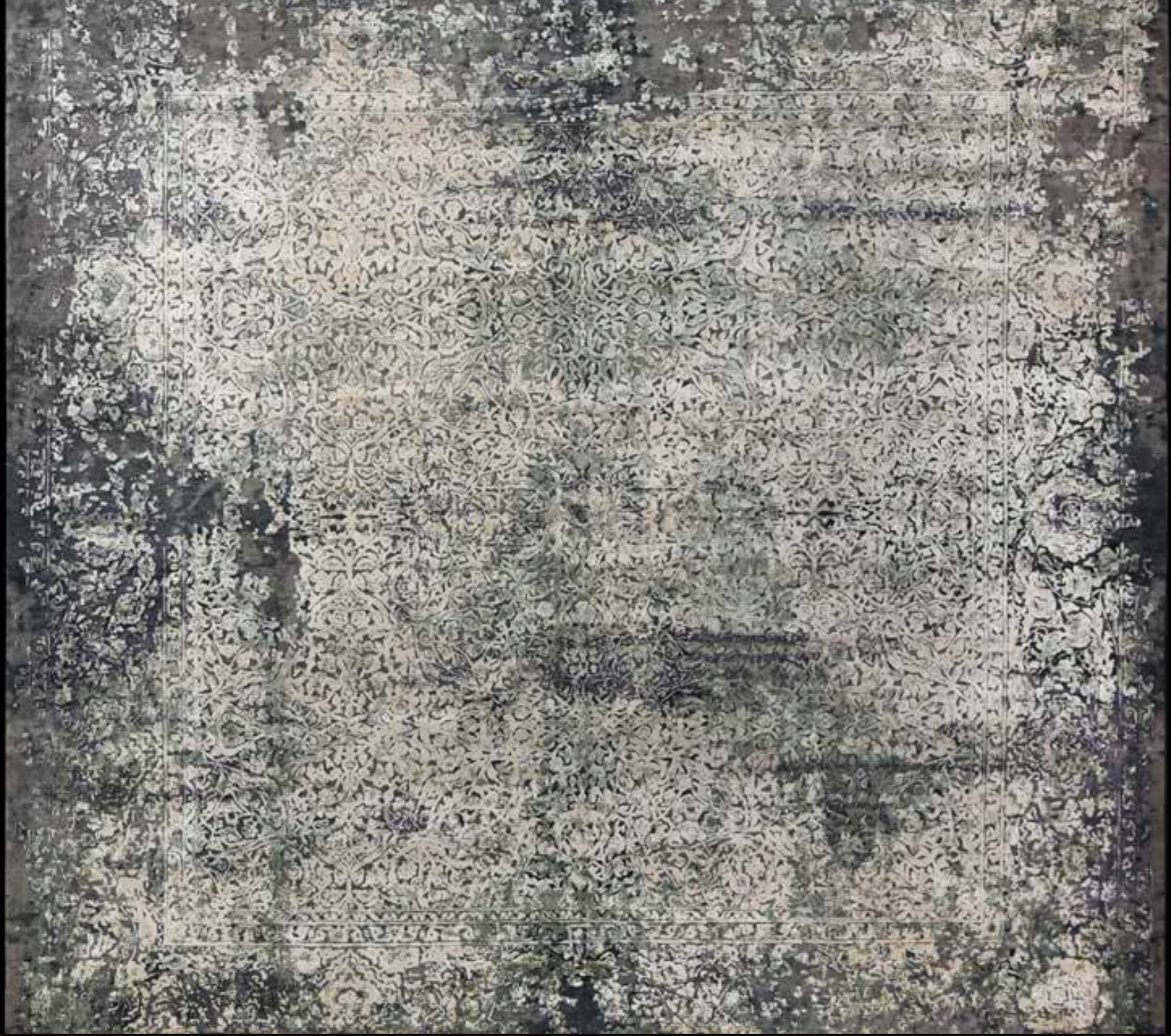
SLATE / AGED GOLD

# Callista

---

An all-silk field in deep navy and warm gold commands attention through the play of light across its dense floral medallion composition. Each knot is a testament to the artisan's singular concentration.

MATERIALS	All Silk
ORIGIN	Bhadohi, India
SIZES	427 × 305 cm



SLATE / PARCHMENT

# Selene

---

A large-format statement rendered in deep charcoal and pale bone, where an all-over formal arabesque dissolves at the borders into deliberate abstraction. Monumental in scale, meditative in presence.

MATERIALS      New Zealand Wool & Natural Silk

ORIGIN          Bhadohi, India

SIZES            400 × 400 cm

SINCE  
RS  
1927  
RAHEEM & SON  
HANDMADE RUGS

---

## Raheem & Son

Bazaar Sardar Khan, Chauri Road

Bhadohi, 221401, India

EST. 1927 · CENTENARY EDITION