

SINCE

RS

1927

RAHEEM & SON

HANDMADE RUGS

THE ANTIQUE COLLECTION

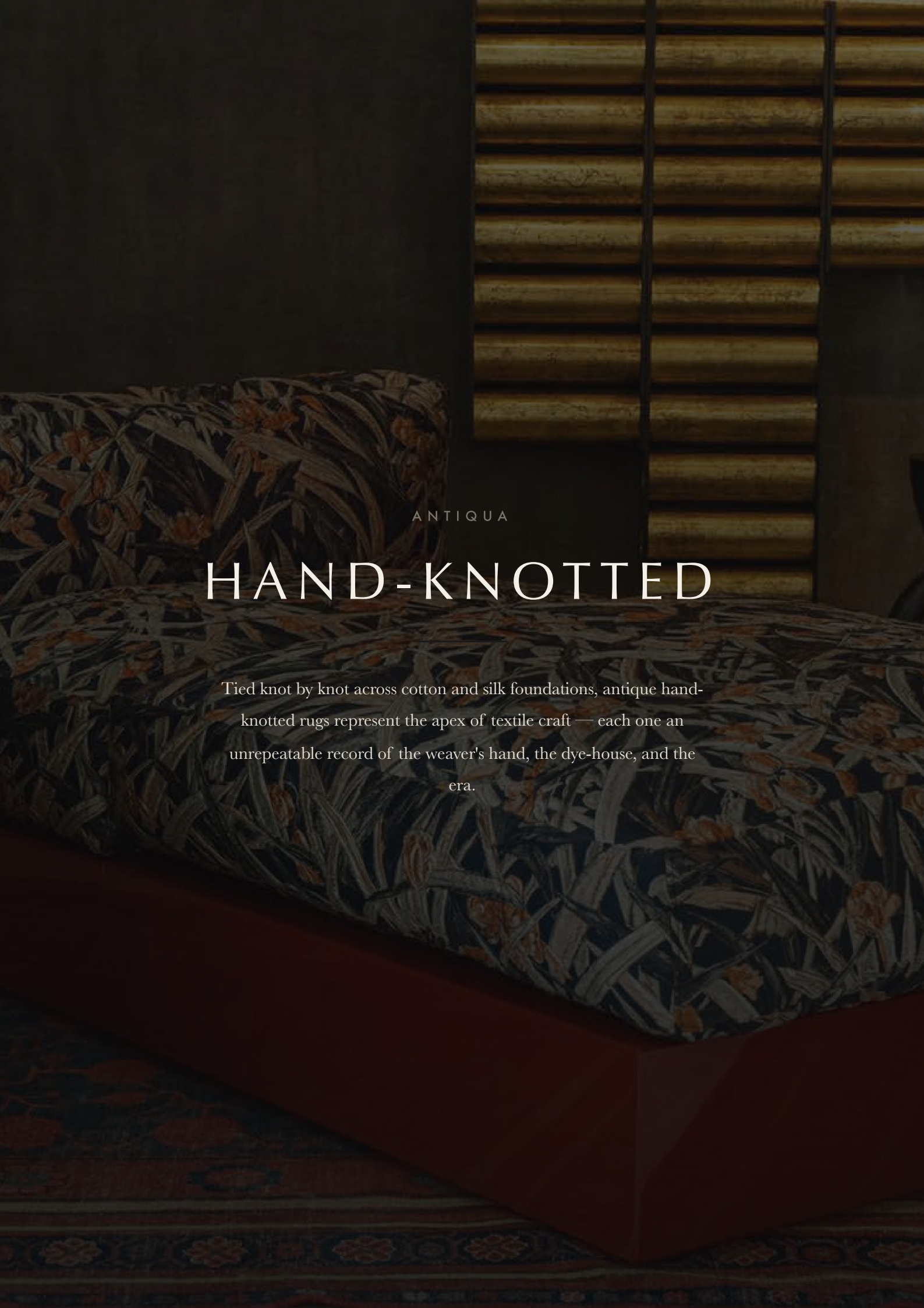
ANTIQUA

HAND-KNOTTED · AUBUSSON · BHADOHI

THE COLLECTION

A living archive of antique weaving.

Each piece in the Antiqua collection carries centuries within its pile — hand-knotted by masters whose craft was never mechanised, woven in silk and wool on looms that outlasted empires. These are not reproductions. They are originals: singular objects that have travelled through time to earn a place in the rarest interiors.



ANTIQUA

HAND-KNOTTED

Tied knot by knot across cotton and silk foundations, antique hand-knotted rugs represent the apex of textile craft — each one an unrepeatable record of the weaver's hand, the dye-house, and the era.



IVORY / DUSTY ROSE / STEEL BLUE

Delphi

A central medallion of extraordinary intricacy floats on an ivory ground softened by centuries of light. The border's disciplined reciprocal guard draws the eye inward, where every tendril resolves into a faultless bloom.

MATERIALS	Silk on Silk
ORIGIN	Bhadohi, India
SIZES	324 × 230 cm



CRIMSON / IVORY / STEEL BLUE

Mycenae

An expansive field of interlaced herati motifs commands attention with a boldness that belies its age. The terracotta reds have mellowed to a warm crimson, while the teal border holds its clarity with quiet authority.

MATERIALS	Silk on Silk
ORIGIN	Bhadohi, India
SIZES	351 × 265 cm



IVORY / TERRACOTTA / BLUSH

Olympus

Woven in an all-over pattern of near-mathematical exactitude, this monumental piece reveals a breath of colour variation only on close study — each motif a world of its own within the greater field.

MATERIALS Silk on Silk
ORIGIN Bhadohi, India
SIZES 438 × 308 cm



IVORY / ROSE / INDIGO

Nestor

Silk on silk of the highest order: the ground catches light and shifts from pale gold to warm cream as the viewing angle changes. The central medallion reads with jewel-like precision even at room scale.

MATERIALS	Silk on Silk
ORIGIN	Bhadohi, India
SIZES	395 × 265 cm



RUSSET / IVORY / MIDNIGHT BLUE

Elysium

This exceptional room-sized weave carries an all-over botanical vocabulary rendered in warm russet and earthy ochre on a pale ground. The scale is palatial; the hand is intimate.

MATERIALS New Zealand Wool on Cotton
ORIGIN Bhadohi, India
SIZES 420 × 376 cm



IVORY / TERRACOTTA / TEAL

Theron

One of the grandest pieces in the collection — its scrolling floral lattice retains a warmth that only deepens with age. The ivory ground remains luminous, the border tightly woven and uncompromised.

MATERIALS New Zealand Wool on Cotton
ORIGIN Bhadohi, India
SIZES 490 × 370 cm



SIENNA / IVORY / SLATE

Lysander

The serpentine vine border sets a formal frame around an open field where palmettes alternate with cloud-bands in a rhythm both stately and alive. A rug that reads as architecture.

MATERIALS New Zealand Wool on Cotton

ORIGIN Bhadohi, India

SIZES 443 × 308 cm



IVORY / ROSE / SLATE BLUE

Cyrus

Silk highlights animate the wool ground in this distinguished weave — the central arabesque catches light in a way that flat pile cannot replicate. A rare construction that bridges the warmth of wool with the lustre of silk.

MATERIALS New Zealand Wool and Silk on Silk

ORIGIN Bhadohi, India

SIZES 443 × 308 cm



WARM IVORY / PERSIMMON / COBALT

Castor

A commanding medallion rug whose borders are layered with guard stripes of contrasting character — each adding depth without complication. The saturated cobalt accents remain vivid against the ivory field.

MATERIALS New Zealand Wool on Cotton

ORIGIN Bhadohi, India

SIZES 352 × 245 cm



IVORY / BLUE / ROSE

Arcadia

A panoramic weave of scrolling medallions and floriated pendants in a cool palette — soft indigo, chalky rose, and ivory in a composition of unhurried grandeur. The extended format suits a long gallery or dining hall.

MATERIALS New Zealand Wool on Cotton
ORIGIN Bhadohi, India
SIZES 531 × 330 cm



Corinth

IVORY / BLUSH / STEEL BLUE



Ithaca

IVORY / ROSE / INDIGO



Atlas

IVORY / BRICK / NAVY



Orion

IVORY / ROSE / TERRACOTTA



Helios

CAMEL / IVORY / ROSE



Aegis

IVORY / TAUPE / ROSE



Linus

IVORY / SAPPHIRE / TERRACOTTA



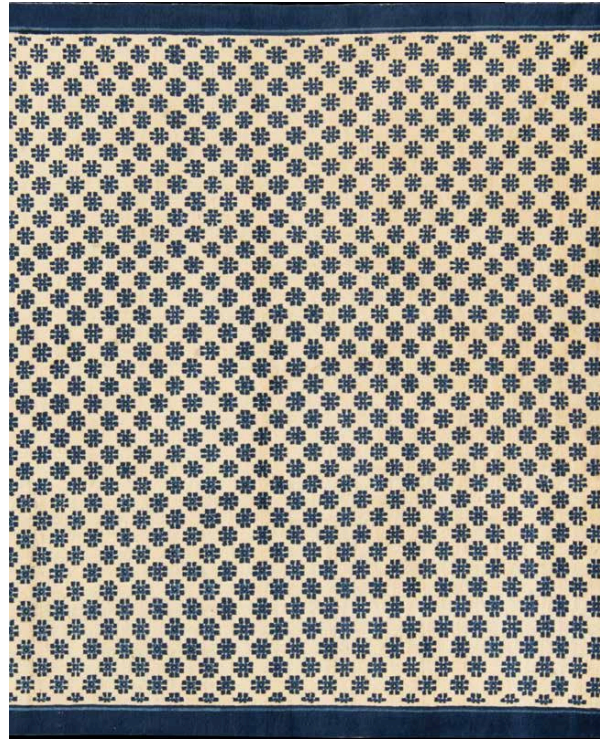
Cadmus

IVORY / RUST / CORNFLOWER



Theia

IVORY / SAGE / BURGUNDY



Selene

IVORY / CREAM / CORNFLOWER BLUE



Phoebe

IVORY / RED / NAVY

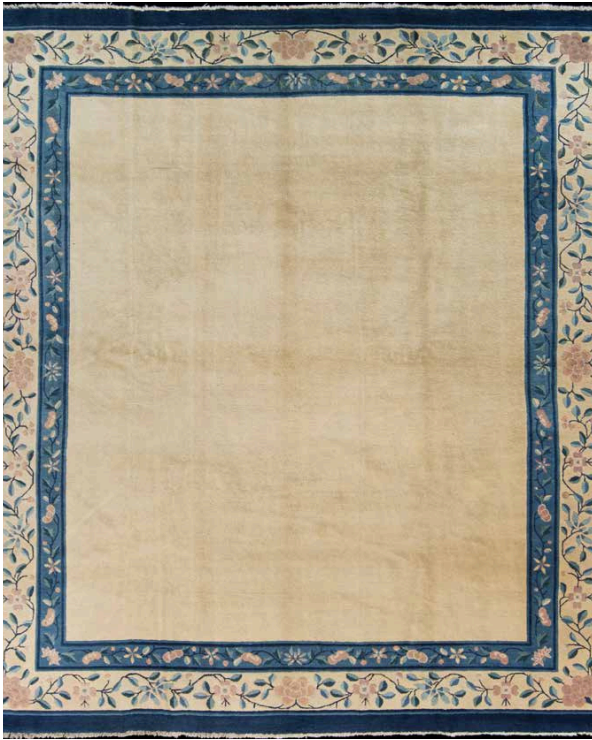


Eos

IVORY / BURGUNDY / SAGE

HAND-KNOTTED

ANTIQUA



Thalassa

IVORY / INDIGO / ROSE



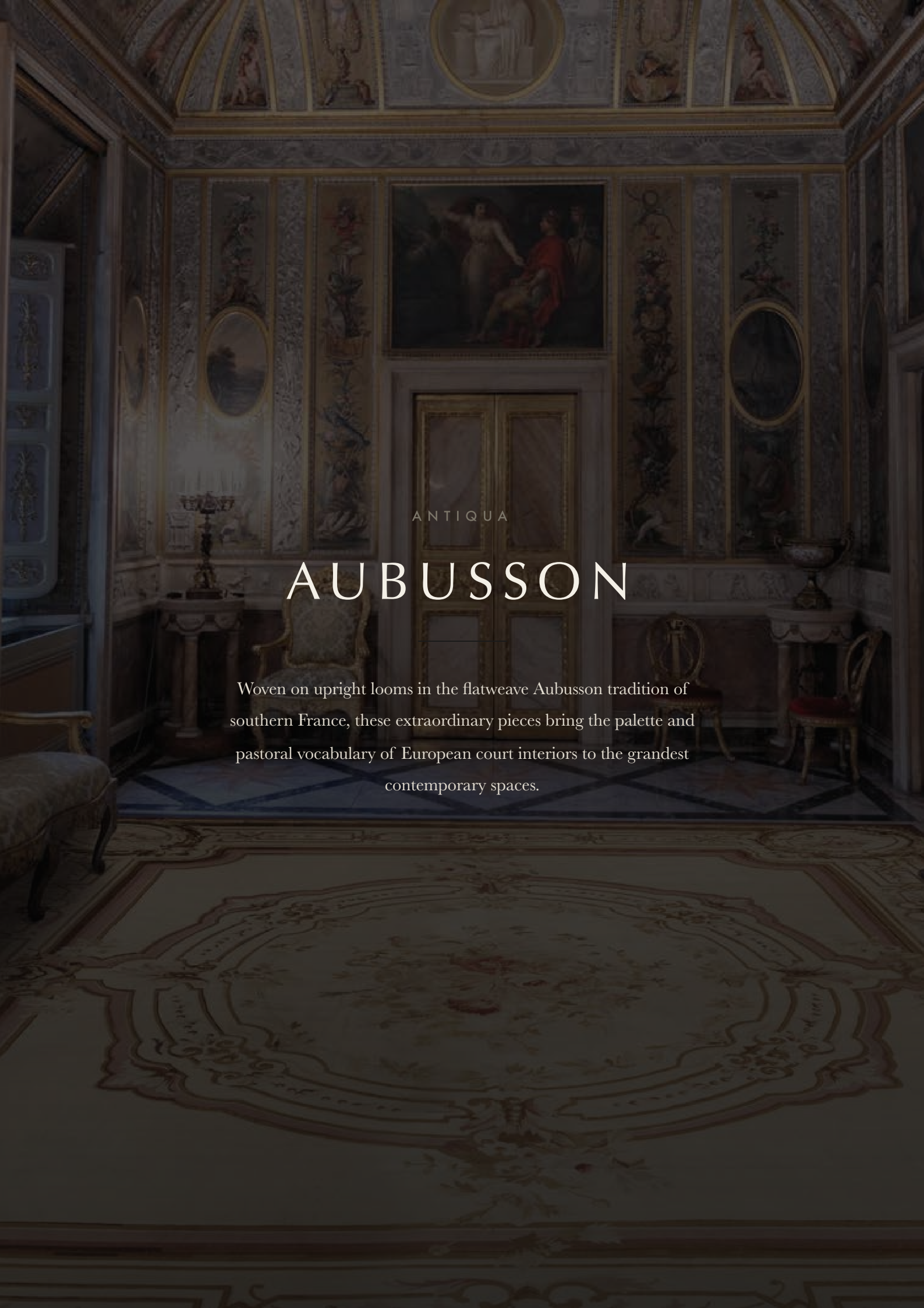
Nyx

IVORY / NAVY / GOLD



Iris

IVORY / INDIGO / TERRACOTTA

A grand, ornate interior room, likely a palace or grand manor. The walls are covered in intricate wall art, including a large central fresco depicting a scene with figures, and several smaller oval and rectangular paintings. The ceiling is also decorated with circular medallions. A central doorway with a decorative frame leads to another room. The floor is covered in a large, patterned rug with a central medallion. The overall atmosphere is one of classical elegance and historical grandeur.

ANTIQUA

AUBUSSON

Woven on upright looms in the flatweave Aubusson tradition of southern France, these extraordinary pieces bring the palette and pastoral vocabulary of European court interiors to the grandest contemporary spaces.



DUSTY ROSE / IVORY / GILT

Andromeda

A jewel of the Aubusson tradition: the central floral medallion is ringed by a cartouche border of restrained classical authority. The dusty rose ground deepens toward the borders, giving the piece a tonal warmth that is unmistakably French.

MATERIALS	New Zealand Wool
ORIGIN	Bhadohi, India
SIZES	500 × 380 cm



IVORY / BLUSH / SAGE / GILT

Callista

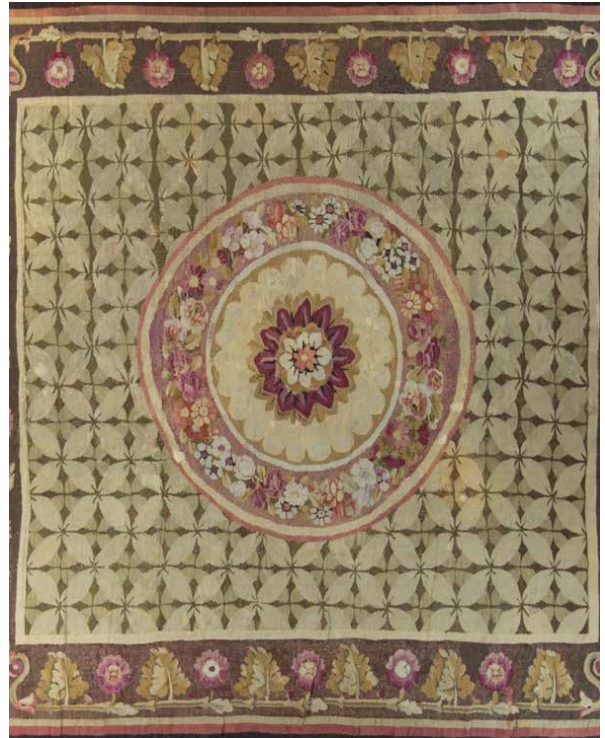
Grand in both scale and sentiment, this Aubusson presents an abundance of garden flowers set against a ground of aged ivory. The pale tonality makes it equally suited to formal reception rooms and light-filled contemporary interiors.

MATERIALS	New Zealand Wool
ORIGIN	Bhadohi, India
SIZES	562 × 445 cm



Halcyon

TAUPE / CREAM / ROSE



Penelope

IVORY / SAGE / BURGUNDY

SINCE
RS
1927
RAHEEM & SON
HANDMADE RUGS

Raheem & Son

Bazaar Sardar Khan, Chauri Road

Bhadohi, 221401, India

HANDMADE RUGS · SINCE 1927