

SINCE
RS
1927
RAHEEM & SON
HANDMADE RUGS

THE COASTAL COLLECTION

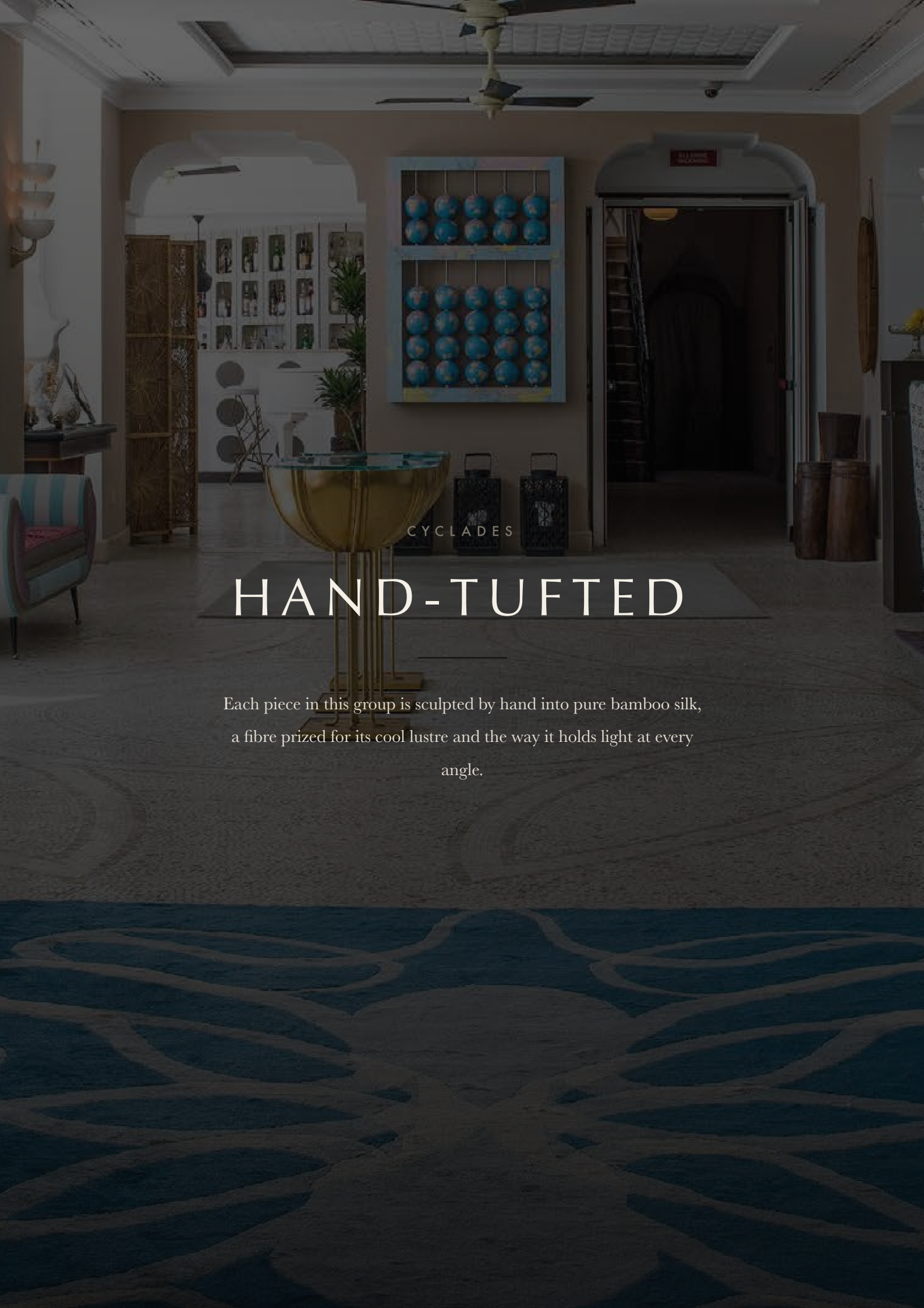
CYCLADES

NATURAL FIBRE · SILK · BHADOHI

THE COLLECTION

Where the tide meets the loom.

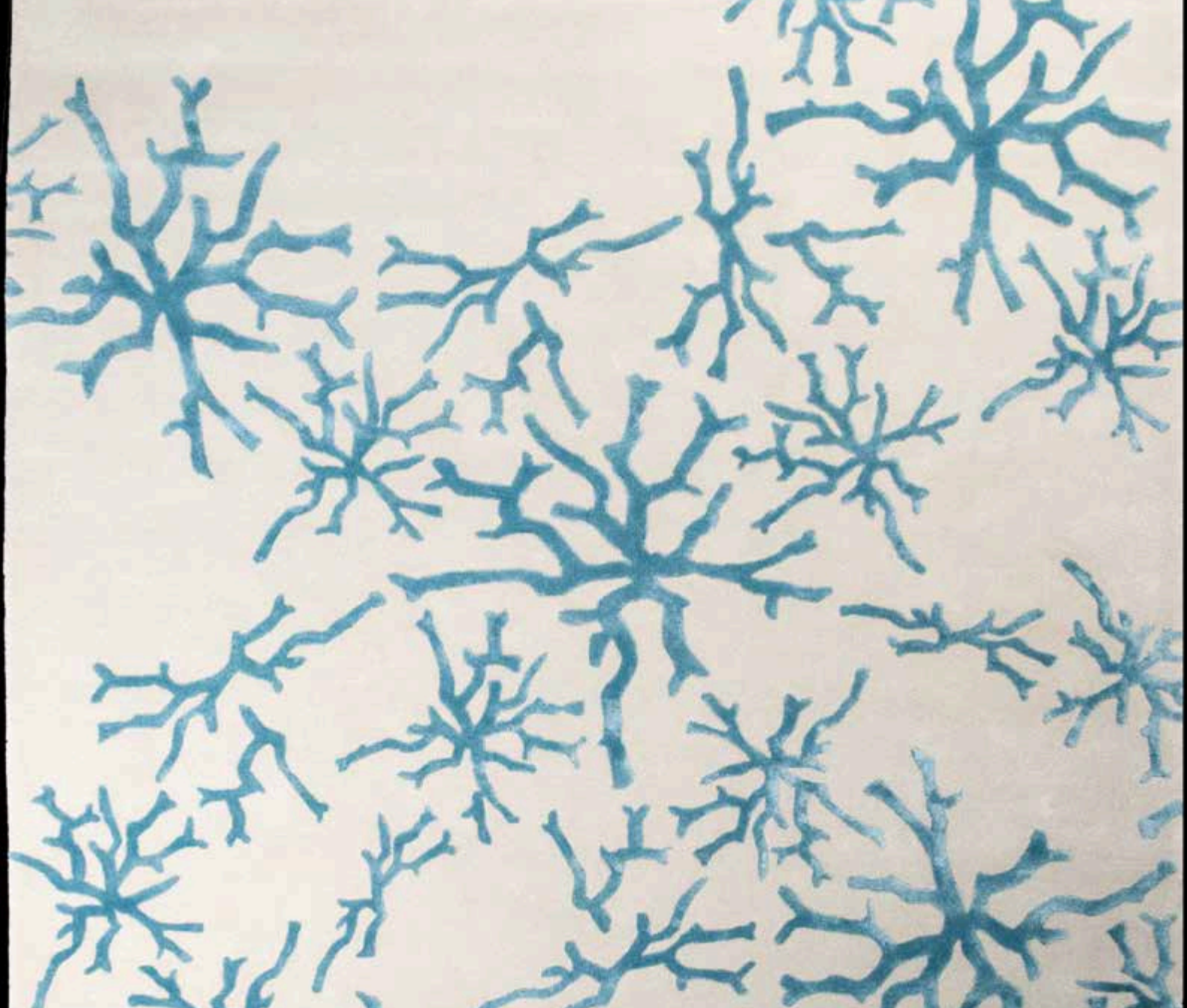
Drawn from the quieter rhythms of island life — dappled light on shallow water, the coarse weave of fishing nets, the pale geometry of bleached coral — Cyclades is a collection of coastal restraint. Natural fibres and hand-worked silk move between the tactile and the luminous, grounding every room in something both ancient and utterly present.



CYCLADES

HAND-TUFTED

Each piece in this group is sculpted by hand into pure bamboo silk, a fibre prized for its cool lustre and the way it holds light at every angle.

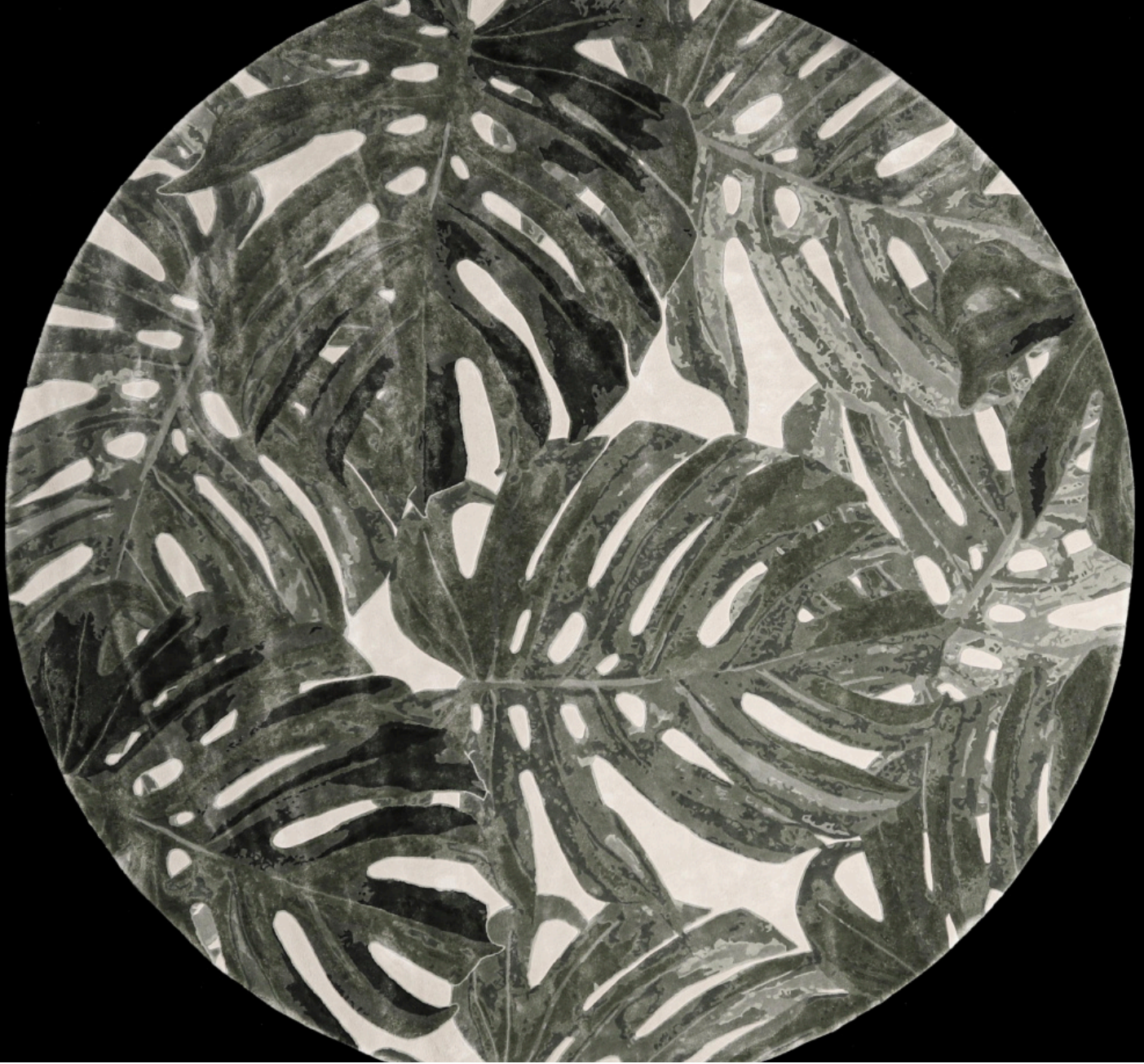


DEEP OCEAN / CHALK

Galene

Named for the goddess of calm seas, this piece carries a field of branching coral rendered in cool cerulean against an ivory ground. The bamboo silk pile catches the light with the same soft glimmer found on still water at midday.

MATERIALS	Bamboo Silk
ORIGIN	Bhadohi, India
CONSTRUCTION	Hand-Tufted



FOREST / IVORY

Ondine

A circular form that echoes the canopy seen from below water — deeply drawn tropical leaves sweep across the pile in layered tones of forest green and white. The round format and fine silk pile give it both intimacy and a quiet drama.

MATERIALS	Bamboo Silk
ORIGIN	Bhadohi, India
SIZES	Diam. 280 cm
CONSTRUCTION	Hand-Tufted



TEAL / IVORY

Delos

A canopy of tropical palms rendered in close-cropped bamboo silk — the deep teal fronds overlap and recede across a pale ground, capturing the quality of light that filters through island foliage in the early hours. Dense pile, quiet presence.

MATERIALS	Bamboo Silk
ORIGIN	Bhadohi, India
CONSTRUCTION	Hand-Tufted



Thalassa

CERULEAN / SAND



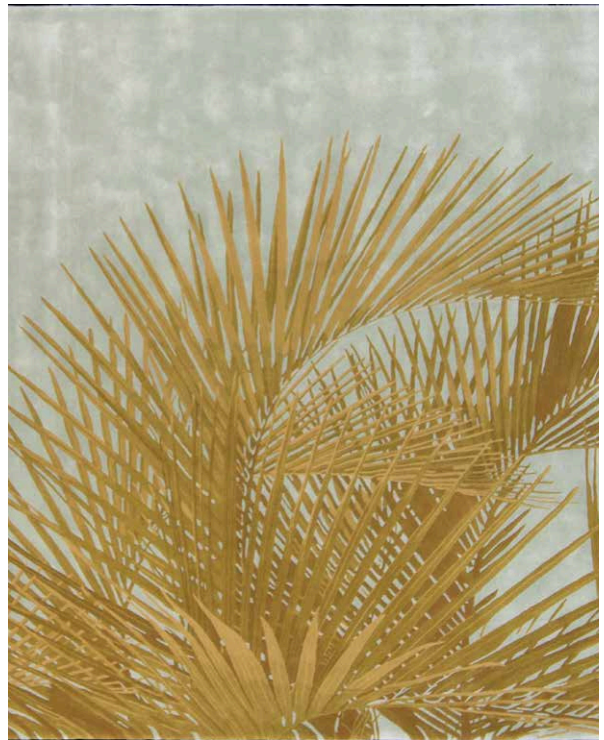
Nerina

IVORY / SAND



Maris

LINEN / STONE



Pleione

IVORY / TAUPE



Calypso

SAGE / IVORY



Halcyon

SAND / STONE



Doris

PEARL / DRIFTWOOD



Ceto

CREAM / TAUPE



Amphitrite

COBALT / LINEN



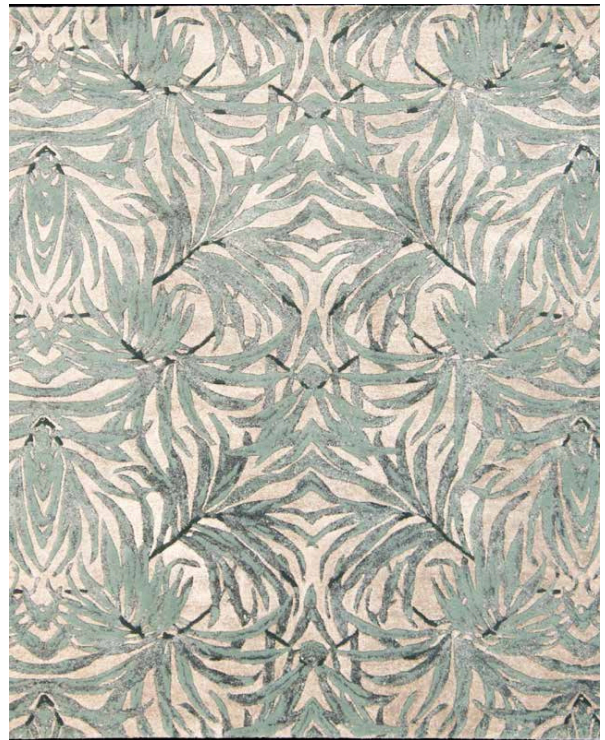
Lemnos

IVORY / SILVER



Paros

SAND / CHALK



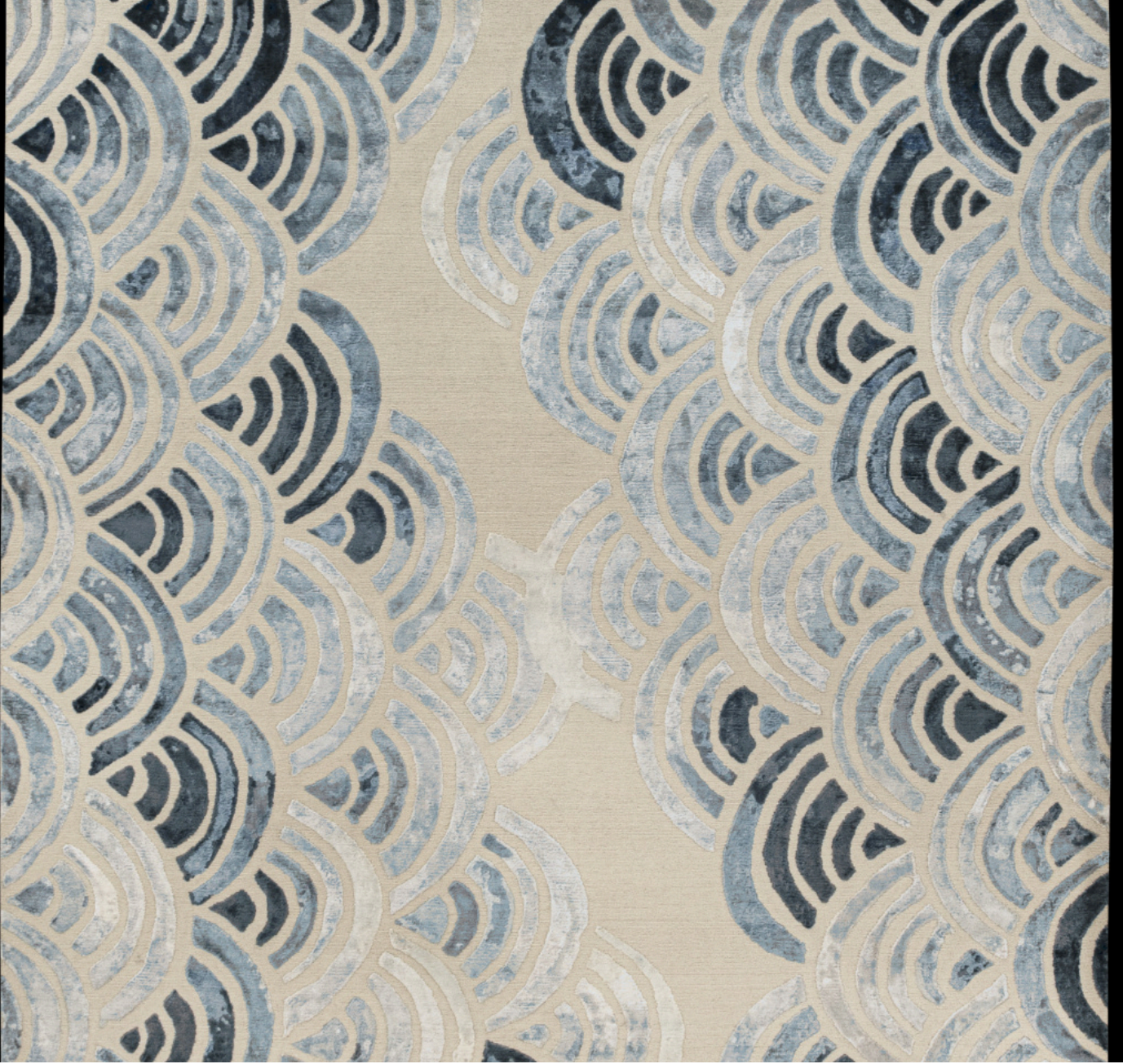
Milos

IVORY / BLUSH

CYCLADES

HAND-KNOTTED

Worked knot by knot on the loom, these pieces in viscose, New Zealand wool, nettle and natural silk carry the considered craft of the Bhadohi tradition — each fibre chosen for the particular quality of light and texture it contributes.



SLATE BLUE / WARM WHITE

Aegean

An aerial rendering of open ocean seen from above — wave patterns in overlapping arcs of blue and silver viscose give this rug the fluid quality of water in motion. The lustrous pile shifts between depth and brilliance depending on the light source.

MATERIALS	Viscose
ORIGIN	Bhadohi, India
SIZES	400 × 300 cm
CONSTRUCTION	Hand-Knotted



OCEAN / IVORY

Naxos

A looped construction that blends the natural resilience of New Zealand wool with the sheen of viscose. The surface reads as a body of moving water — restless, textural, and deeply coastal in its palette of grey-blue and ecru.

MATERIALS	New Zealand Wool & Viscose
ORIGIN	Bhadohi, India
SIZES	300 × 250 cm
CONSTRUCTION	Hand-Knotted



WHEAT / FLAX

Thira

Jute and bamboo silk combine here in a composition of quiet coastal warmth. The natural earth tones of jute ground a subtle pattern while the silk threads catch and hold light across the pile — a union of raw fibre and refined lustre.

MATERIALS	Jute & Bamboo Silk
ORIGIN	Bhadohi, India
SIZES	400 × 300 cm
CONSTRUCTION	Hand-Knotted



TEAL / IVORY

Hydra

A fluid figurative motif — sea creatures rendered in fine viscose on a light ground — moves between illusion and abstraction. The combination of cut pile and relief viscose lends the surface a three-dimensional shimmer rarely achieved in flat yarn.

MATERIALS	Viscose
ORIGIN	Bhadohi, India
SIZES	400 × 300 cm
CONSTRUCTION	Hand-Knotted



AMBER / CREAM

Samos

Rendered entirely in viscose, this rug draws a warm marine silhouette in amber and ochre against a pale field. The relief construction gives the figure sculptural presence while the silk-like handle keeps the surface luminous and soft underfoot.

MATERIALS	Viscose
ORIGIN	Bhadohi, India
SIZES	400 × 300 cm
CONSTRUCTION	Hand-Knotted



INDIGO / SAND

Kos

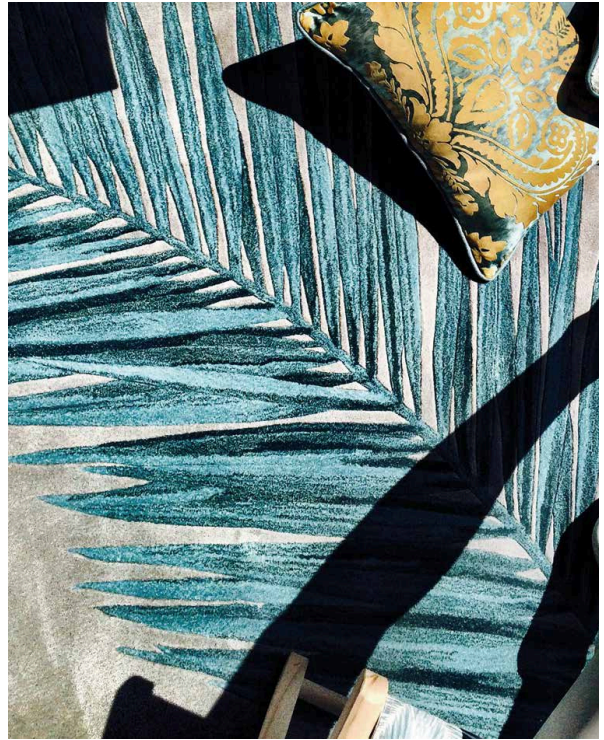
Deep indigo meets the warmth of New Zealand wool in an abstracted seascape. Layered tones of ocean blue and coastal sand read like the shoreline at last light — where the tide draws back to reveal its true depth of colour.

MATERIALS	Viscose & New Zealand Wool
ORIGIN	Bhadohi, India
SIZES	400 × 300 cm
CONSTRUCTION	Hand-Knotted



Amphora

PEARL / SMOKE



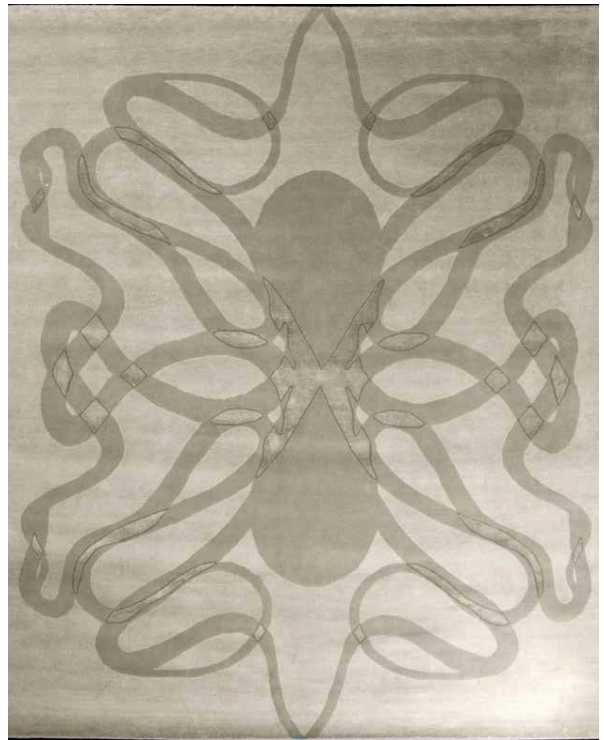
Galatea

CERULEAN / BLUSH



Nerissa

AZURE / PARCHMENT



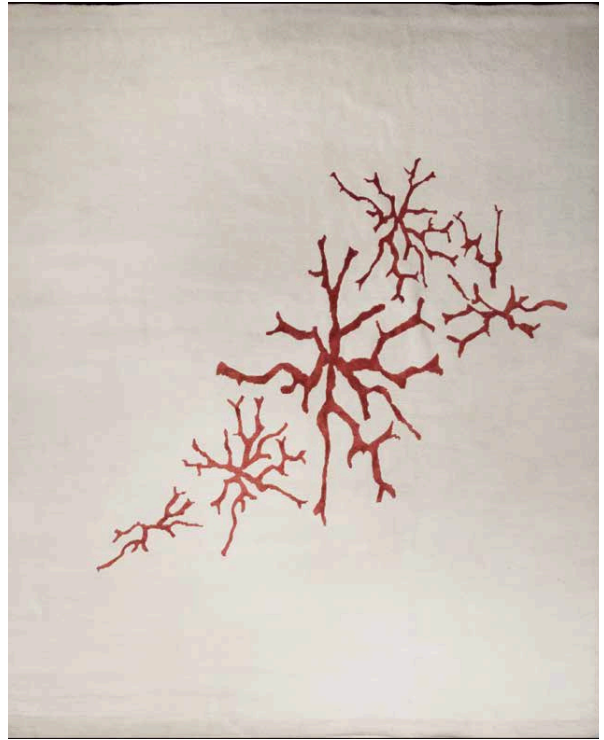
Proteus

LINEN / STONE



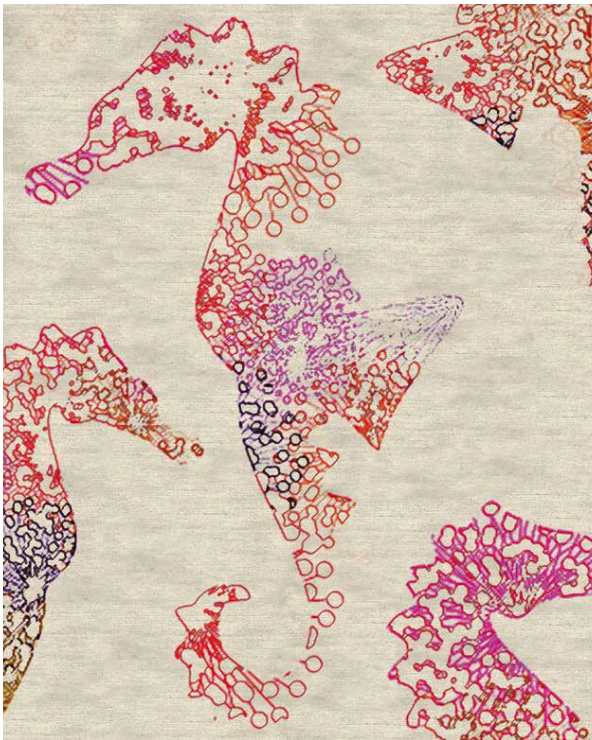
Tethys

IVORY / WHEAT



Theia

CRIMSON / IVORY



Eos

CORAL / IVORY

SINCE
RS
1927
RAHEEM & SON
HANDMADE RUGS

Raheem & Son

Bazaar Sardar Khan, Chauri Road

Bhadohi, 221401, India

HANDMADE RUGS · SINCE 1927