

SINCE

RS

1927

RAHEEM & SON

HANDMADE RUGS

THE SILK COLLECTION

ELYSIAN

HAND-KNOTTED SILK · BHADOHI

THE COLLECTION

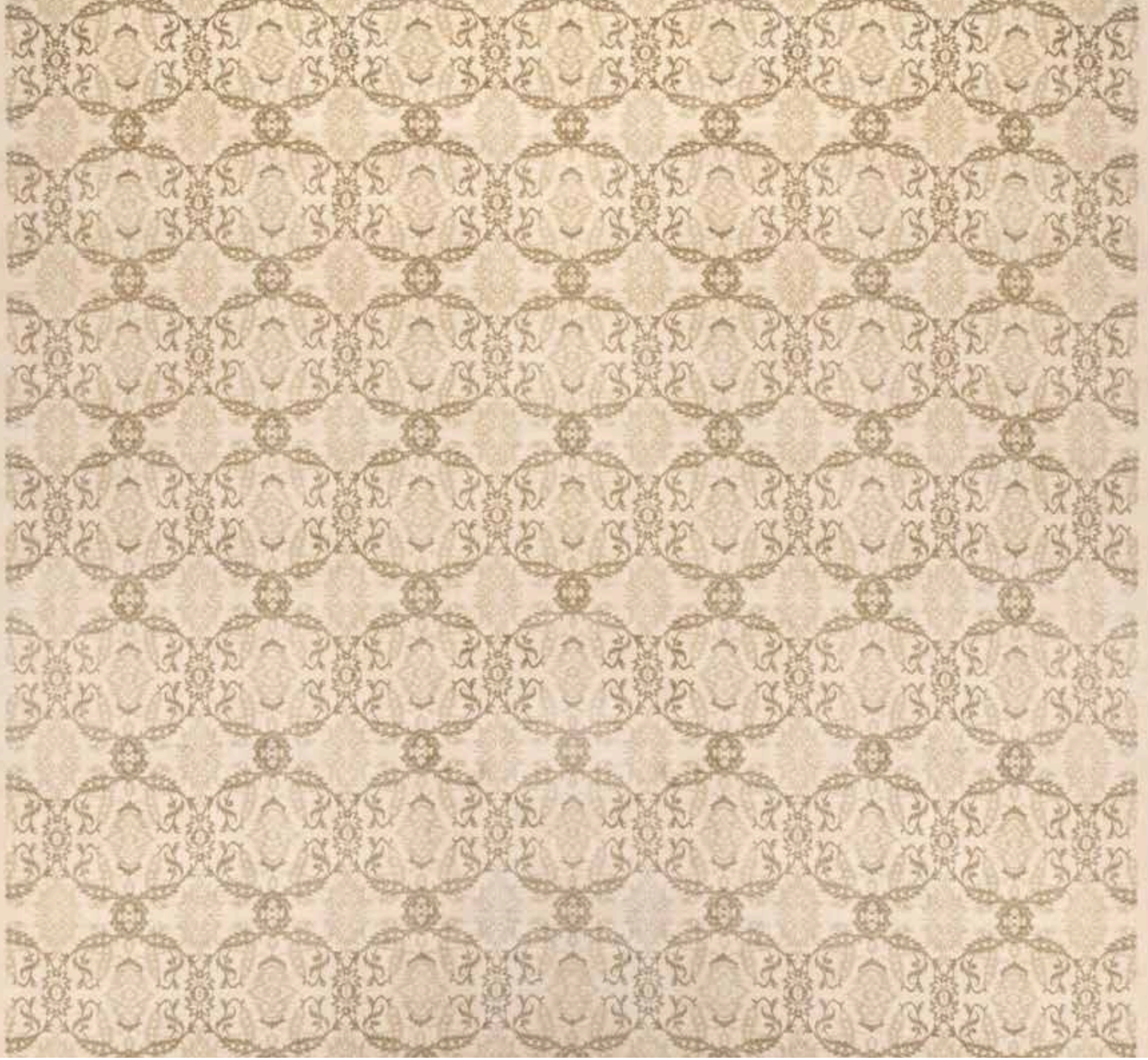
Where light is woven into every thread.

The Elysian collection brings together the most luminous hand-knotted work from our atelier — pure silk on silk grounds, metal and golden thread that catches and releases light, and New Zealand wool woven against a silk foundation for a lustre that deepens with time. Each piece is made entirely by hand in Bhadohi, carrying forward a tradition measured in generations.

ELYSIAN

HAND-KNOTTED

Every knot is tied by hand. Silk warps and wefts support pile fibres of extraordinary fineness — pure silk, golden thread, and New Zealand wool — producing a surface that shifts in brilliance as the light changes.



IVORY / SOFT GOLD

Chryseis

A ground of unbroken ivory silk carries an all-over field of interlocking vine scrolls, their rhythm so fine that the surface appears to breathe. The pale gold border frames the composition without interruption.

MATERIALS	Silk on Silk
ORIGIN	Bhadohi, India
SIZES	348 × 297 cm



IVORY / SAGE / BLUSH

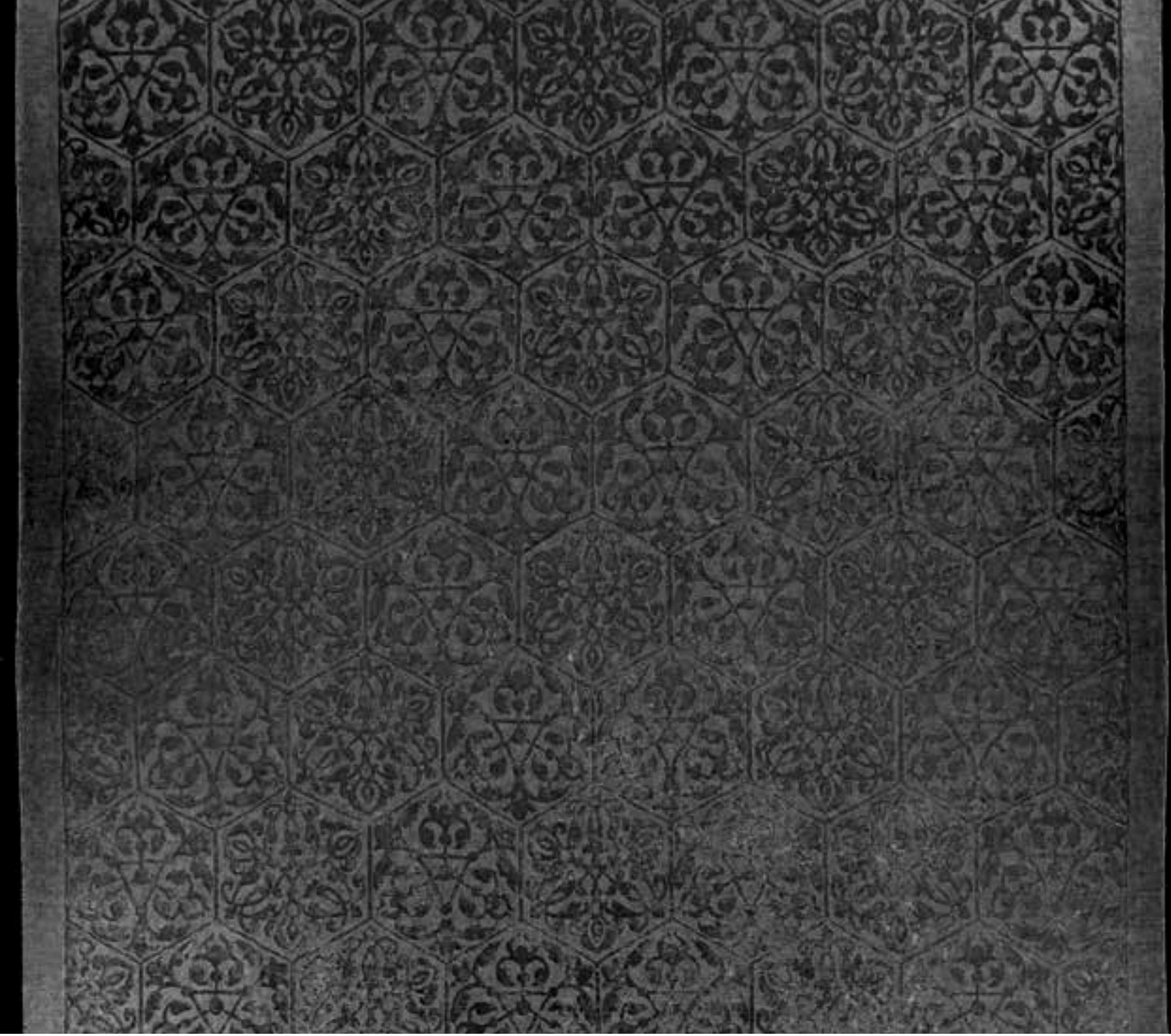
Phaedra

Soft botanical motifs unfold across a field of ivory, drawn in sage and dusted rose. The wool pile lends a gentle warmth to the silk ground beneath, and the border is restrained — a quiet frame for an intricate interior.

MATERIALS New Zealand Wool & Silk on Silk

ORIGIN Bhadohi, India

SIZES 289 × 244 cm



EBONY / GRAPHITE

Evadne

Worked in metal thread against a deep ebony ground, this piece moves between near-invisible shadow and brilliant relief depending on the angle of light. An exceptional study in restrained darkness.

MATERIALS Metal Thread & Silk

ORIGIN Bhadohi, India

SIZES 402 × 293 cm



SAGE / IVORY / GOLD

Thais

Among the largest pieces in the collection, this room-scale silk achieves an intricate formal medallion at monumental proportions. The sage and ivory colourway reads with exceptional subtlety at a distance and reveals layered detail on approach.

MATERIALS	Silk on Silk
ORIGIN	Bhadohi, India
SIZES	800 × 500 cm



IVORY / ROSE / PALE BLUE

Ianthe

A classical medallion composition suffused in rose and pale blue against ivory — the palette of old Persia rendered in pure silk. The border integrates matching corner spandrels that complete the geometry with precision.

MATERIALS	Silk on Silk
ORIGIN	Bhadohi, India
SIZES	600 × 400 cm



IVORY / CHAMPAGNE / BLUSH

Hesperia

A hushed palette of ivory and champagne animates a dense arabesque field, the silk pile shifting from near-white to pale gold as the eye moves across the surface. A piece of considered quietness.

MATERIALS Silk on Silk
ORIGIN Bhadohi, India
SIZES 628 × 410 cm



IVORY / BLUSH / PALE SAGE

Damaris

Centuries of Persian medallion tradition are distilled into this long, serene composition. The central sunburst medallion radiates into a field of floral sprays, all worked in a palette so refined it approaches monochrome.

MATERIALS	Silk on Silk
ORIGIN	Bhadohi, India
SIZES	584 × 390 cm



IVORY / BEIGE

Callista

Rendered in New Zealand wool against a silk foundation, the surface holds a calm warmth that pure silk alone cannot achieve. A tightly drawn floral lattice covers the field without interruption, anchored by an understated double border.

MATERIALS New Zealand Wool & Silk

ORIGIN Bhadohi, India

SIZES 396 × 296 cm

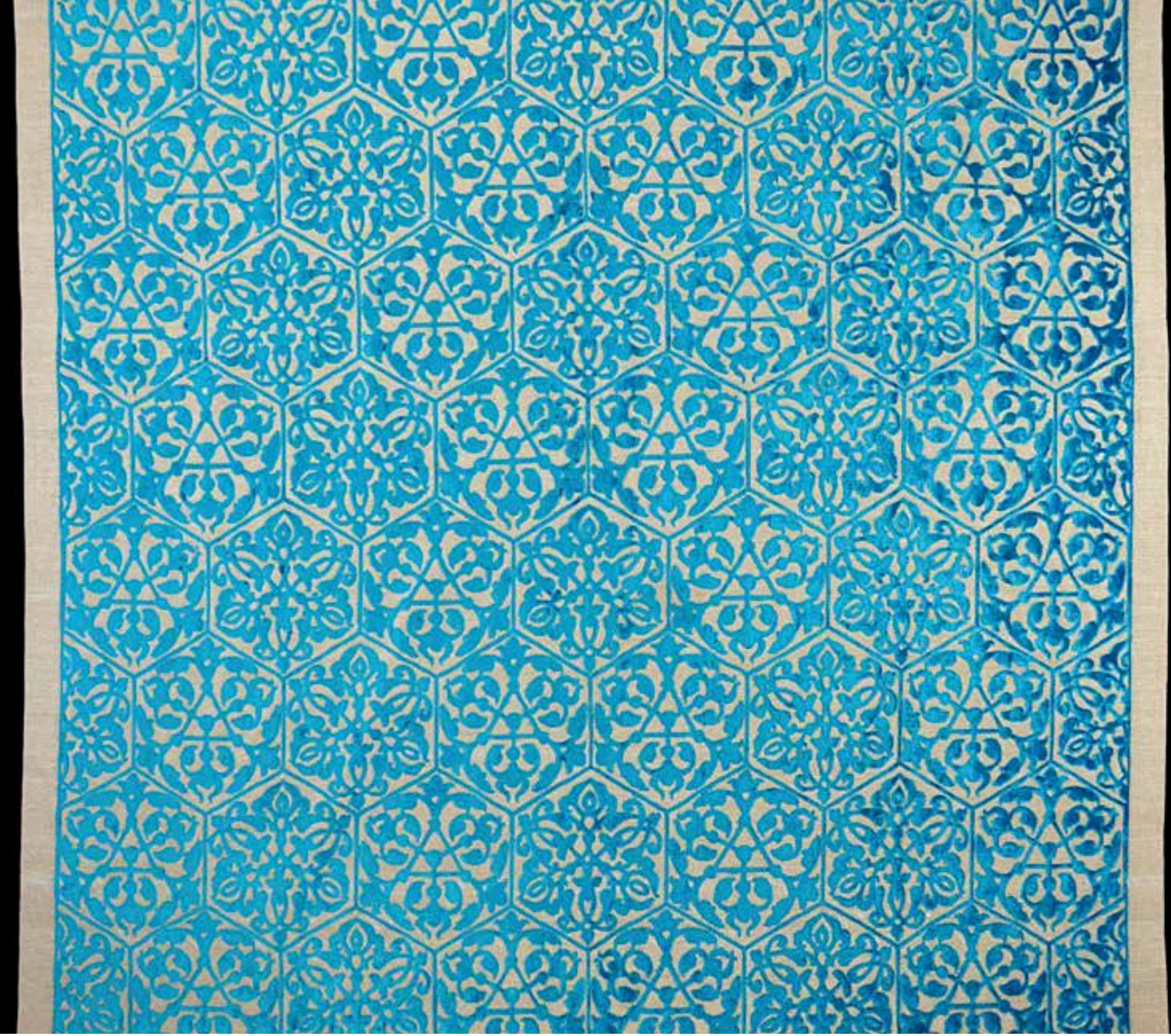


IVORY / GOLDEN

Galatea

Golden thread runs through the pile and surface of this piece, introducing a luminous warmth that silk alone does not possess. The all-over geometric and floral pattern catches and releases light with each degree of shift.

MATERIALS Metal Thread & Silk
ORIGIN Bhadohi, India
SIZES 288 × 241 cm



TURQUOISE / IVORY / GOLD

Xanthe

A vivid ground of turquoise silk — rare in this form — accepts the shimmer of woven golden thread to produce a surface of extraordinary chromatic intensity. Square proportions give the composition perfect balance.

MATERIALS Metal Thread & Silk
ORIGIN Bhadohi, India
SIZES 240 × 233 cm



CHOCOLATE / IVORY

Cassia

A rich chocolate ground provides deep contrast for ivory arabesques worked in silk relief. The pile's cut height varies subtly across the surface to emphasise key motifs, a technique that animates the pattern in raking light.

MATERIALS	Silk on Silk
ORIGIN	Bhadohi, India
SIZES	450 × 350 cm



RED / IVORY / BLUE MEDALLION

Aurelia

A commanding room-scale silk built around a deep crimson field and a blue central medallion. The bilateral symmetry is precise across its full 8-metre length, a testament to the skill of the master weavers.

MATERIALS Silk on Silk
ORIGIN Bhadohi, India
SIZES 837 × 505 cm

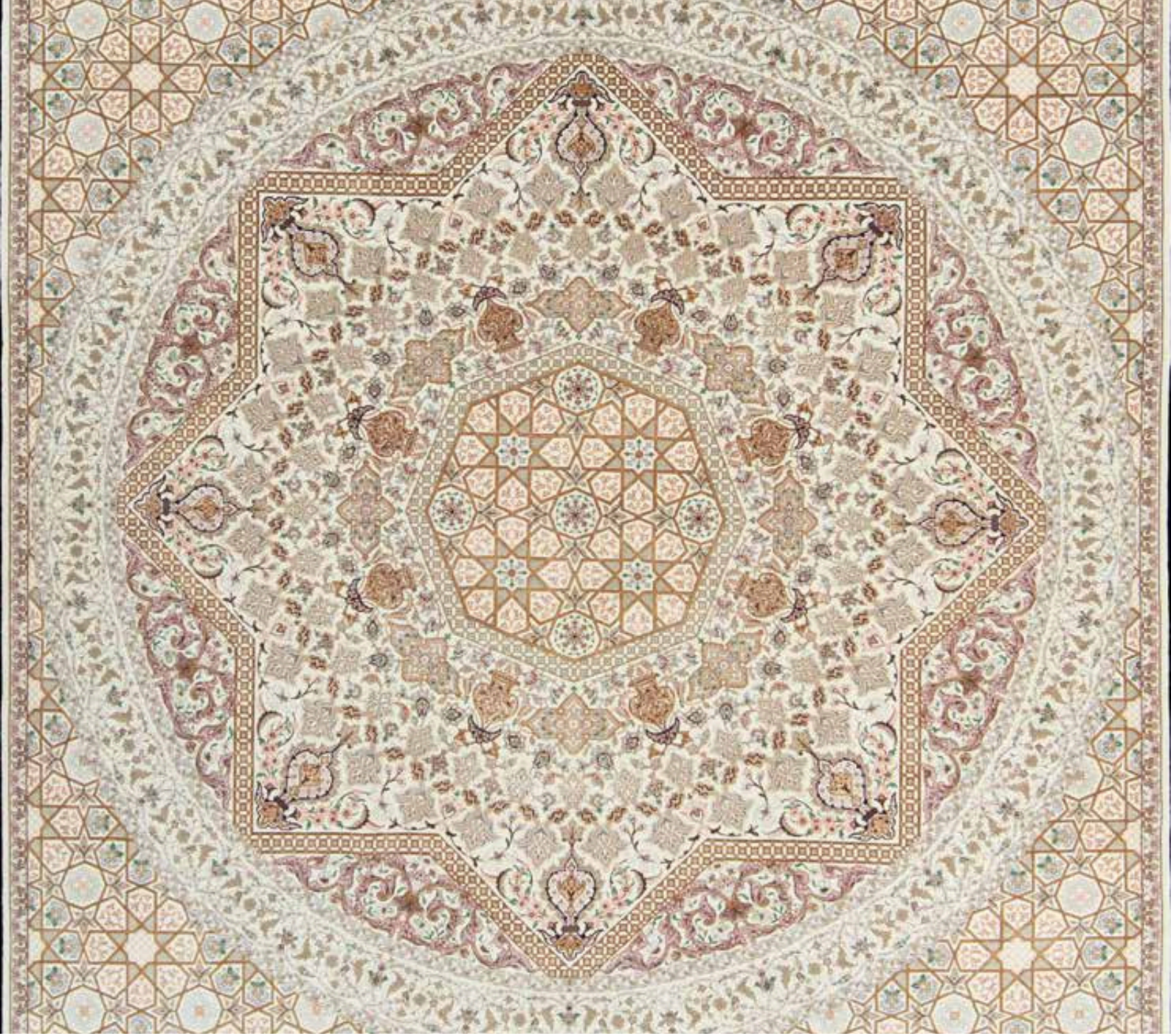


IVORY / GREY / PALE ROSE

Aglaia

The weft-face of New Zealand wool creates a subdued lustre, while the silk warp foundation keeps the hand supple and light. A soft, dispersed floral pattern covers the ground in muted rose and grey.

MATERIALS	Silk & New Zealand Wool on Silk
ORIGIN	Bhadohi, India
SIZES	610 × 408 cm



IVORY / PALE GOLD

Ismene

A symmetrical square composition centred on a delicate sunburst medallion. The pale gold wool pile rests on a silk ground to produce a surface of quiet iridescence, perfect for rooms that prize understated refinement.

MATERIALS New Zealand Wool & Silk on Silk
ORIGIN Bhadohi, India
SIZES 300 × 300 cm



IVORY / CORAL / MULTI

Lysandra

An elaborate star-medallion anchors this long gallery silk, its coral and ivory palette enlivened by accents of green and blue. The border system — three bands, each distinct — frames the composition with classical authority.

MATERIALS	Silk on Silk
ORIGIN	Bhadohi, India
SIZES	670 × 412 cm

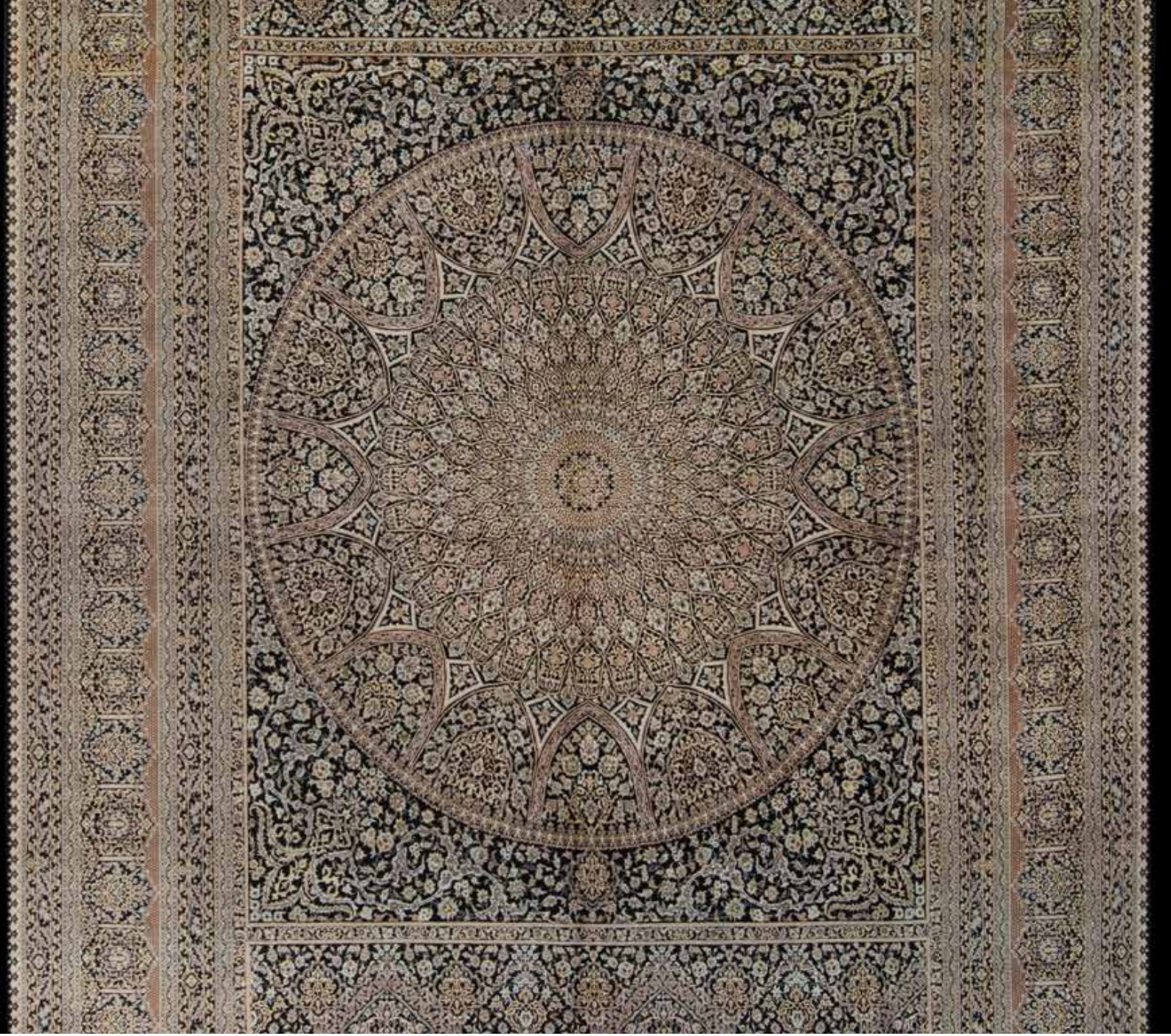


IVORY / BLUSH / CHAMPAGNE

Melia

Delicate floral sprays meander across an ivory ground in blush and champagne. The wool pile is kept exceptionally low, drawing the eye into the fineness of the pattern rather than the texture of the surface.

MATERIALS	New Zealand Wool & Silk on Silk
ORIGIN	Bhadohi, India
SIZES	504 × 345 cm

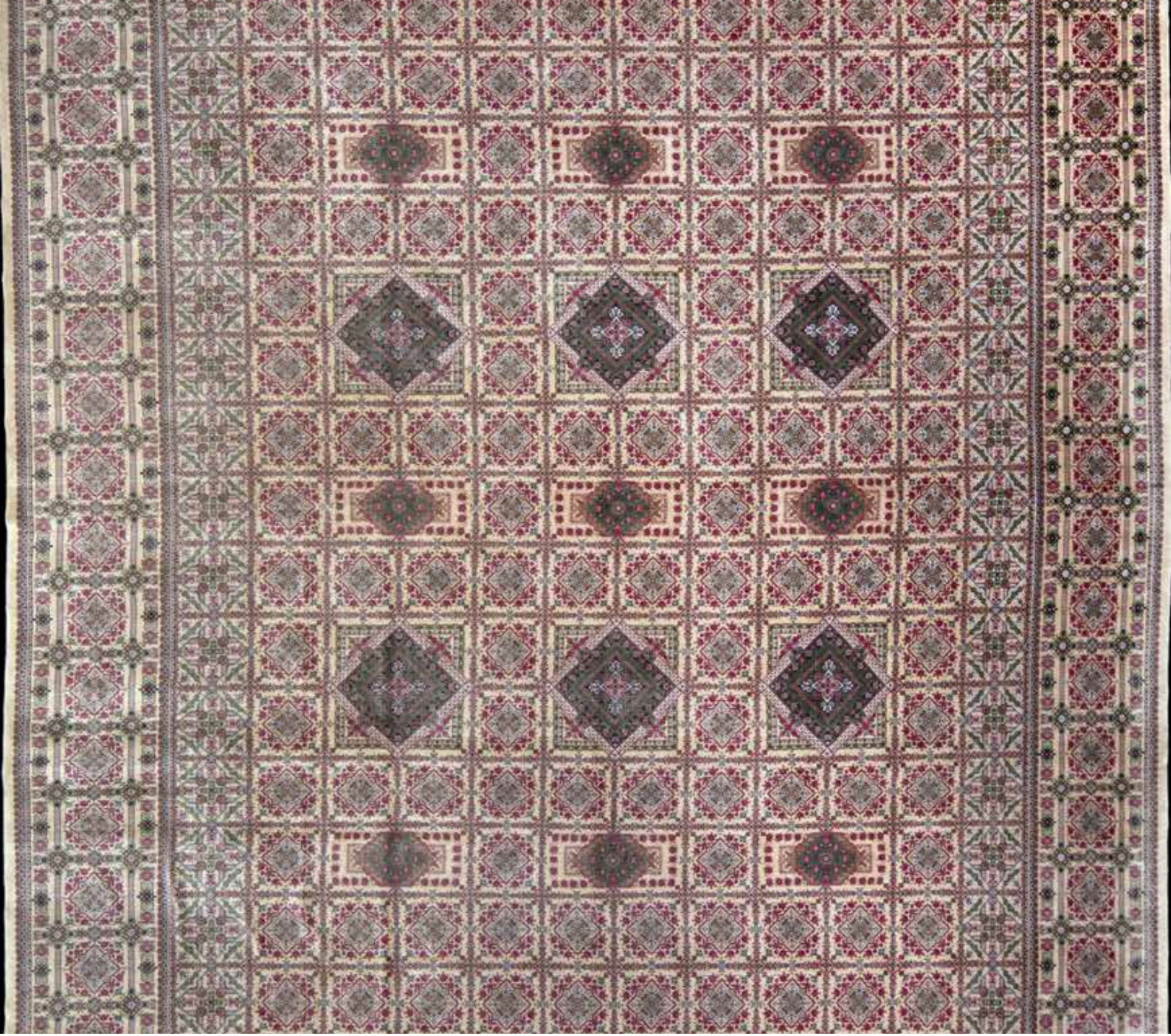


DARK BROWN / IVORY / GOLD

Danae

A jewel-dark ground of deep brown supports an all-over medallion lattice in ivory and gold. The contrast is stark and deliberate — a piece conceived for rooms with strong architectural character.

MATERIALS	Silk on Silk
ORIGIN	Bhadohi, India
SIZES	510 × 338 cm



BLUSH / IVORY / TAUPE

Aretha

A formal Persian medallion floats against a blush ground, its surrounding field filled with delicate herati work. The taupe border introduces just enough contrast to ground the composition without disturbing its serenity.

MATERIALS Silk on Silk
ORIGIN Bhadohi, India
SIZES 578 × 405 cm



IVORY / MAUVE / PALE BLUE

Zelia

A composition of great delicacy: an oval medallion set in a field of floral sprays, the whole piece worked in tones of mauve and pale blue on ivory. The silk pile creates a surface that shifts from silver to lavender as the light changes.

MATERIALS	Silk on Silk
ORIGIN	Bhadohi, India
SIZES	400 × 296 cm



IVORY / CHAMPAGNE / GREY

Nerissa

An expansive ivory ground holds a finely drawn geometric medallion with floral infill. The wool pile is combed smooth, giving the surface a matte warmth that complements the shimmer of its silk foundation.

MATERIALS New Zealand Wool & Silk on Silk

ORIGIN Bhadohi, India

SIZES 415 × 305 cm

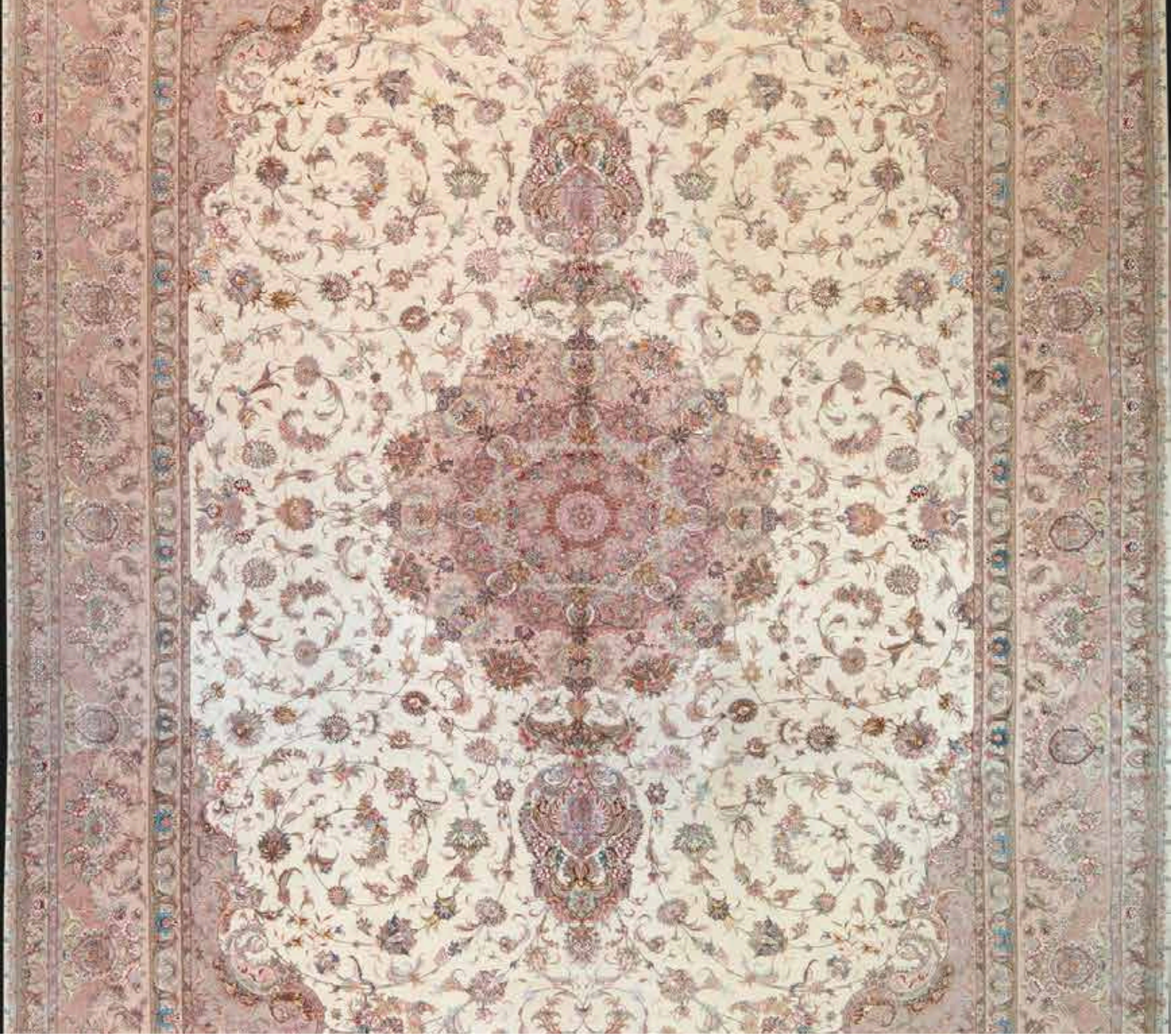


IVORY / WARM GOLD / BLUSH

Semele

A room-defining silk of immense clarity: the large central medallion is framed by a meticulously balanced field of floral arabesques in warm gold and ivory. The outer border uses a contrasting vine scroll to complete the frame.

MATERIALS	Silk on Silk
ORIGIN	Bhadohi, India
SIZES	690 × 490 cm



IVORY / CHAMPAGNE / SAND

Halcyon

Conceived at gallery scale, this piece achieves a softness of palette that belies its size. A central medallion dissolves into a field of scattered floral work, all within a quiet ivory and champagne ground.

MATERIALS New Zealand Wool & Silk on Silk
ORIGIN Bhadohi, India
SIZES 787 × 490 cm



IVORY / BLUSH SAND

Phoebe

A wide-field composition with botanical density across every inch — no ground colour is left unworked. The blush and sand palette creates a tonal softness ideal for light-filled rooms and considered interiors.

MATERIALS New Zealand Wool & Silk

ORIGIN Bhadohi, India

SIZES 358 × 253 cm



IVORY / TERRACOTTA / SOFT BLUE

Rhea

A traditional Persian field pattern — dense, rhythmic, and perfectly scaled — rendered in terracotta and soft blue on a warm ivory ground. The wool pile adds tactile depth to a visually complex surface.

MATERIALS New Zealand Wool & Silk

ORIGIN Bhadohi, India

SIZES 587 × 395 cm



Farahnaz

OLIVE / IVORY / TEAL



Naxos

IVORY / CHAMPAGNE



Farzaneh

HUNTER GREEN / IVORY



Arcadia

FOREST GREEN / IVORY / GOLD



Shahan

DARK NAVY / CRIMSON



Thetis

IVORY / PALE SAGE



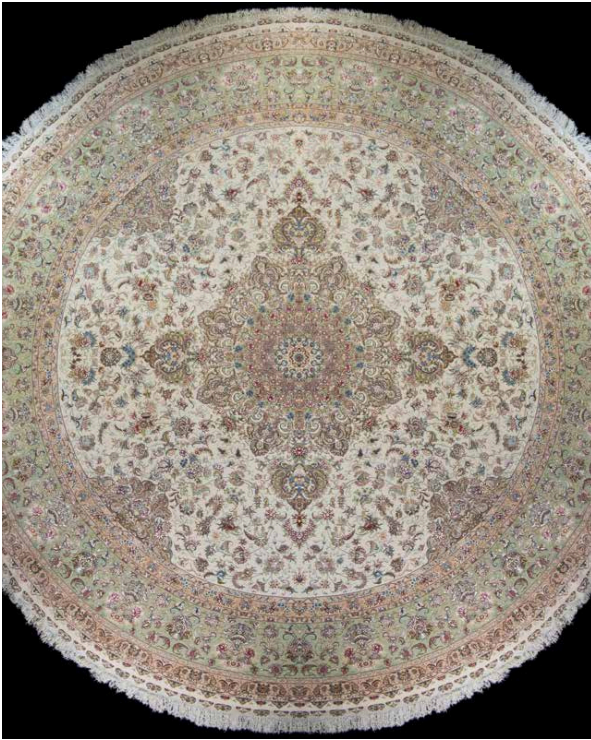
Padideh

CRIMSON / NAVY / MULTI



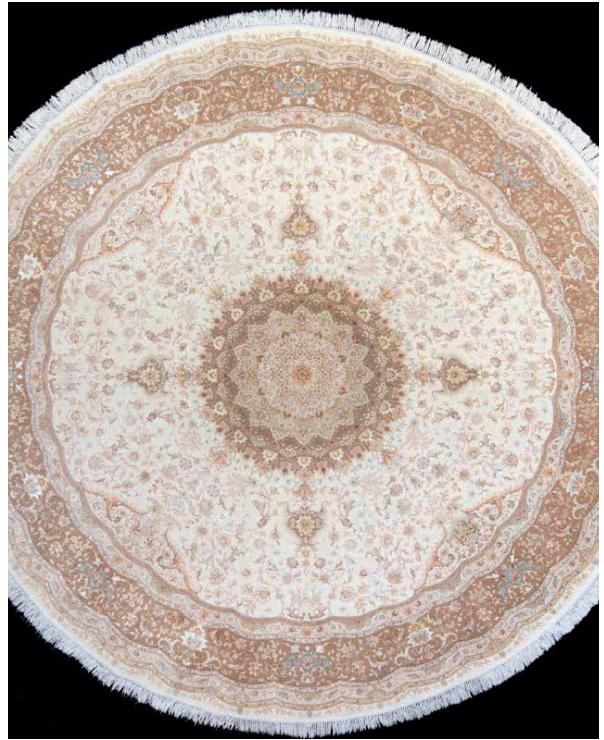
Sobhani

RED / NAVY / IVORY



Afsar

IVORY / PALE ROSE (ROUND)



Guzal

IVORY / CHAMPAGNE (ROUND)



Rojan

IVORY / BLUE / ROSE (GARDEN)



Aram

IVORY / PALE BLUE



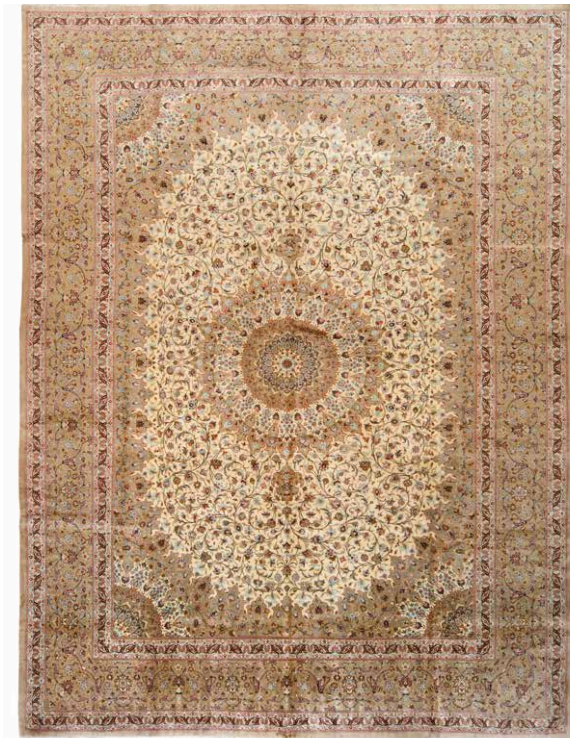
Anahita

MIDNIGHT NAVY / IVORY



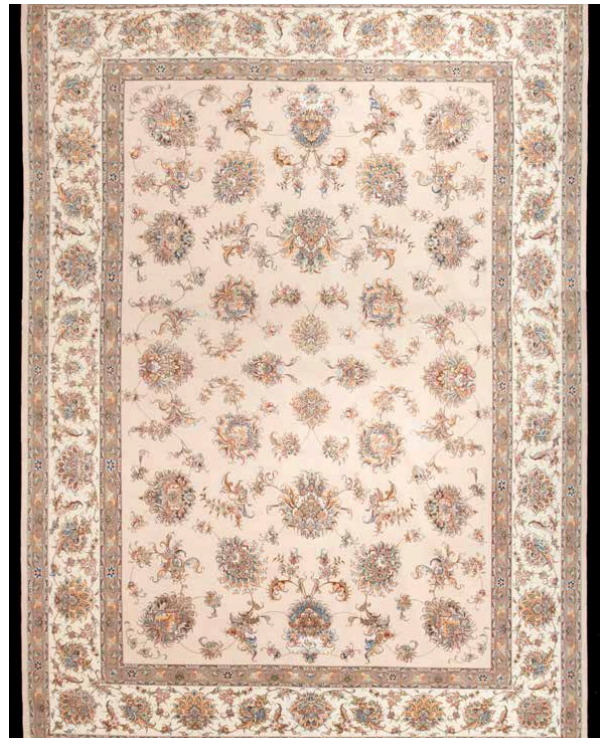
Olympus

IVORY / CHAMPAGNE / SAND



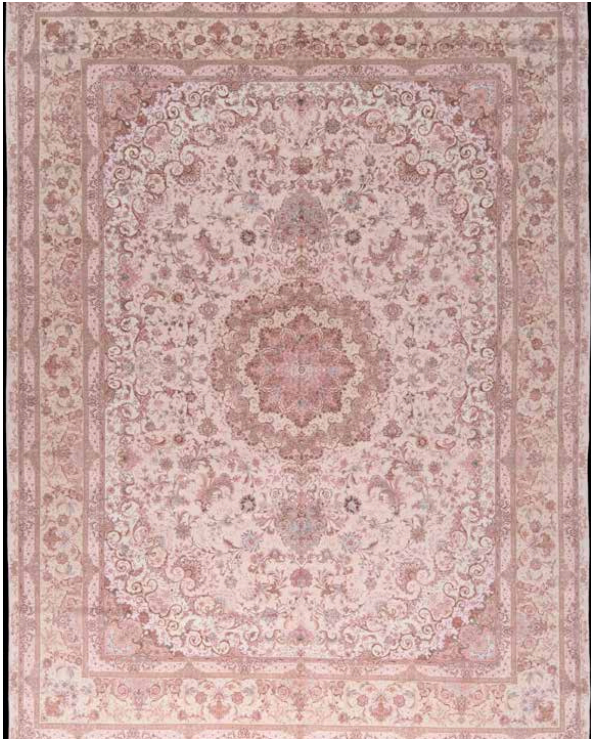
Elara

IVORY / BLUSH



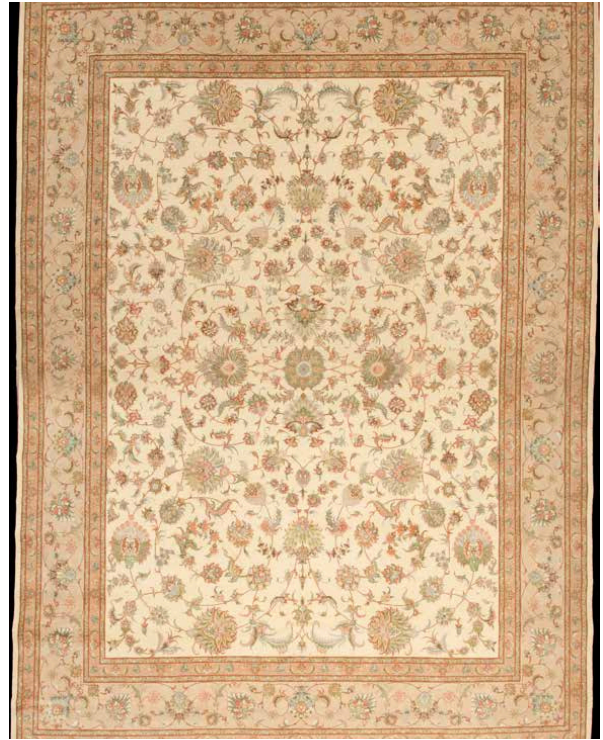
Parinaz

IVORY / WARM BEIGE



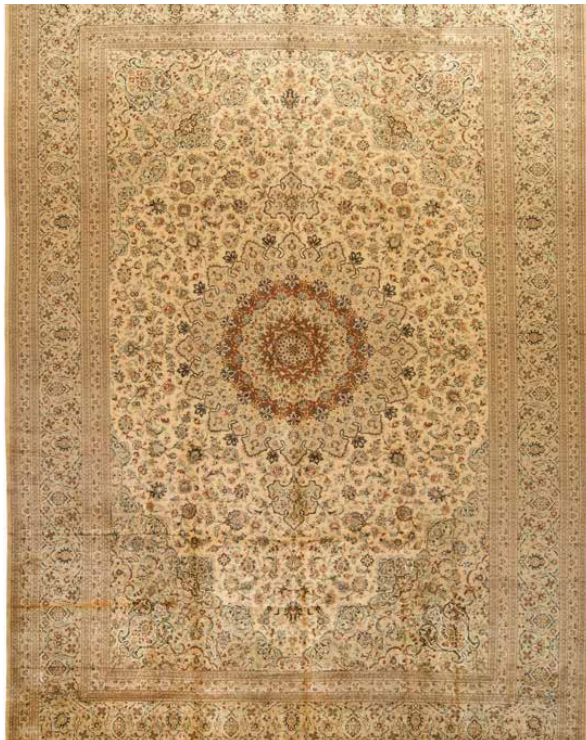
Yekta

IVORY / ROSE BLUSH



Sabah

IVORY / CHAMPAGNE / GOLD



Talah

IVORY / WARM GOLD



Negah

IVORY / TERRACOTTA DETAIL

SINCE
RS
1927
RAHEEM & SON
HANDMADE RUGS

Raheem & Son

Bazaar Sardar Khan, Chauri Road

Bhadohi, 221401, India

HANDMADE RUGS · SINCE 1927