



SINCE  
RS  
1927

RAHEEM & SON  
HANDMADE RUGS

THE ANTIQUE COLLECTION

PALAIYA

HAND-KNOTTED WOOL · BHADOHI

THE COLLECTION

# Heirlooms shaped by ancient hands.

---

**P**alaia draws from the oldest traditions of the Persian loom — the medallion geometries of Heriz and Serapi, the all-over flowering fields of Peshawar, the washed restraint of the Antique Natural, and the elemental texture of the Oasis. Each piece is hand-knotted in Bhadohi in 100% wool, carrying the weight and warmth of something that will endure long past the room it enters.



PALAI A

# HAND-KNOTTED

Each rug in the Palaia collection is built knot by knot on the loom — a technique unchanged over centuries, demanding patience and craft in equal measure. The result is a pile of unusual density and resilience, able to hold both the finest ornamental detail and the deepest field of colour.



IVORY / RUST

# Nestor

---

A luminous ivory field animated by rust-red border and sinuous palmette vines — the classic Heriz vocabulary rendered at its most welcoming. The open centre breathes while the surround commands.

MATERIALS      100% Wool  
ORIGIN            Bhadohi, India  
SIZES              6'×9' · 8'×10' · 9'×12' · 10'×14' · 12'×15' · 12'×18' · Custom



RED / NAVY

# Priam

---

A richly saturated crimson ground carrying bold geometric medallions and angular vine ornament within a deep indigo border. Unmistakably Heriz in spirit — assertive, architectural, enduring.

MATERIALS     100% Wool  
ORIGIN         Bhadohi, India  
SIZES            6'×9' · 8'×10' · 9'×12' · 10'×14' · 12'×15' · 12'×18' · Custom



IVORY / RED

# Hector

---

A warm ivory field set beneath a rust-orange border, its Heriz floral lattice deployed with quiet symmetry. The muted ground amplifies the warmth of the surrounding frame.

MATERIALS 100% Wool

ORIGIN Bhadohi, India

SIZES 6'×9' · 8'×10' · 9'×12' · 10'×14' · 12'×15' · 12'×18' · Custom



NAVY / RED

# Cadmus

---

A midnight-navy ground threaded with the bold Heriz repeat in brick red and ochre — a deeply saturated composition that commands any space with understated authority.

MATERIALS      100% Wool  
ORIGIN            Bhadohi, India  
SIZES              6'×9' · 8'×10' · 9'×12' · 10'×14' · 12'×15' · 12'×18' · Custom



GREY / IVORY

# Peleus

---

A softly toned antique field in sage-grey and parchment, its all-over botanical ornament worn to a gentle abstraction. A rug of considerable restraint and quiet depth.

MATERIALS     100% Wool

ORIGIN         Bhadohi, India

SIZES            5'×8' · 8'×10' · 9'×12' · 10'×14' · Custom



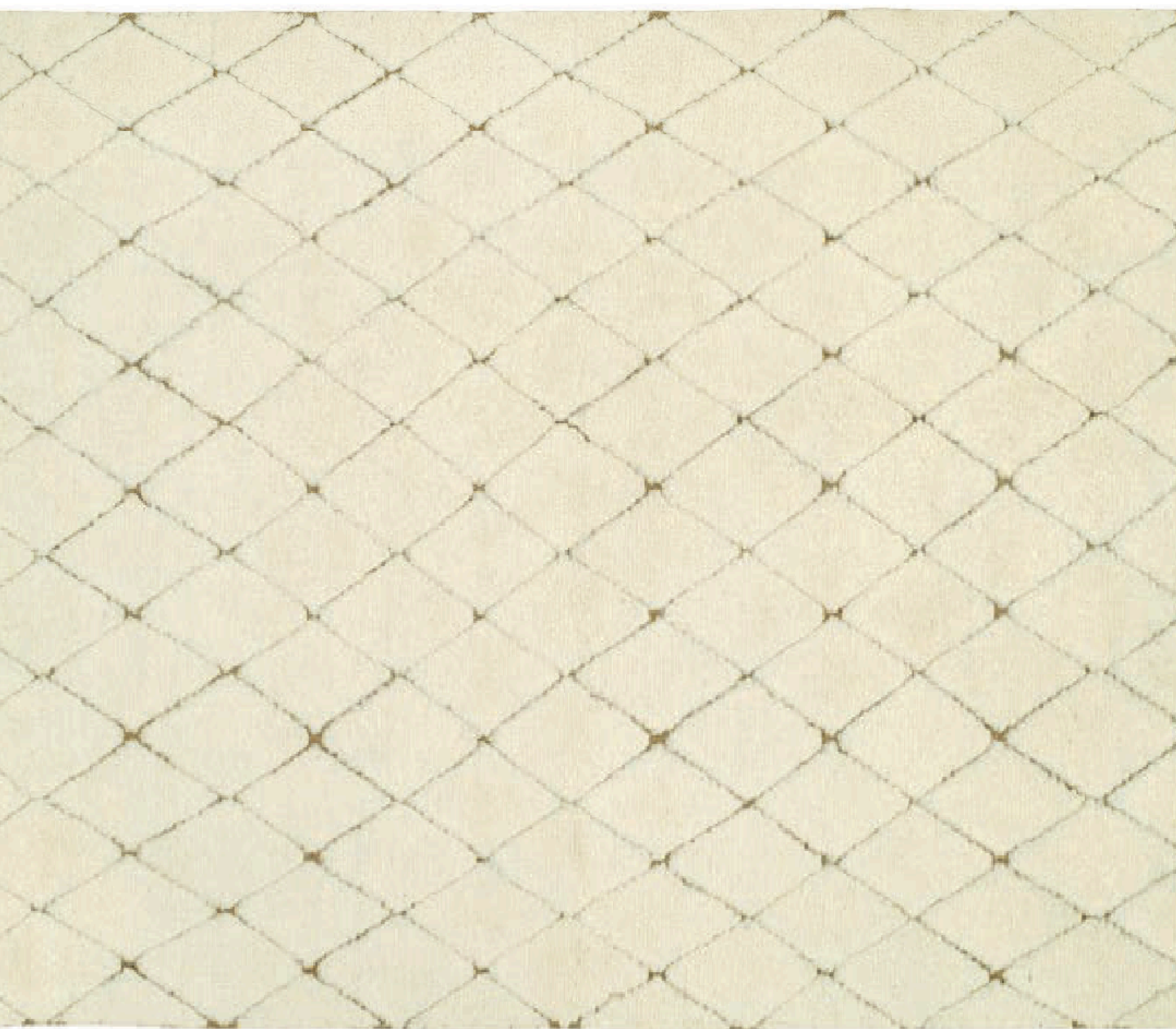
NATURAL / BLUE

# Telamon

---

Warm natural tones tinged with aged blue — a distressed field pattern suggesting a textile that has lived fully. The washed palette rewards rooms of pale stone and raw linen.

|           |                                            |
|-----------|--------------------------------------------|
| MATERIALS | 100% Wool                                  |
| ORIGIN    | Bhadohi, India                             |
| SIZES     | 5'x8' · 8'x10' · 9'x12' · 10'x14' · Custom |



IVORY

# Theron

---

A cloud-ivory shag of handspun wool with a diamond lattice traced in the high-low pile. The Moroccan spirit is unmistakable — plush, elemental, and thoroughly serene.

|           |                                                      |
|-----------|------------------------------------------------------|
| MATERIALS | 100% Wool                                            |
| ORIGIN    | Bhadohi, India                                       |
| SIZES     | 5'x8' · 7'9"×9'9" · 8'9"×11'9" · 9'9"×13'9" · Custom |



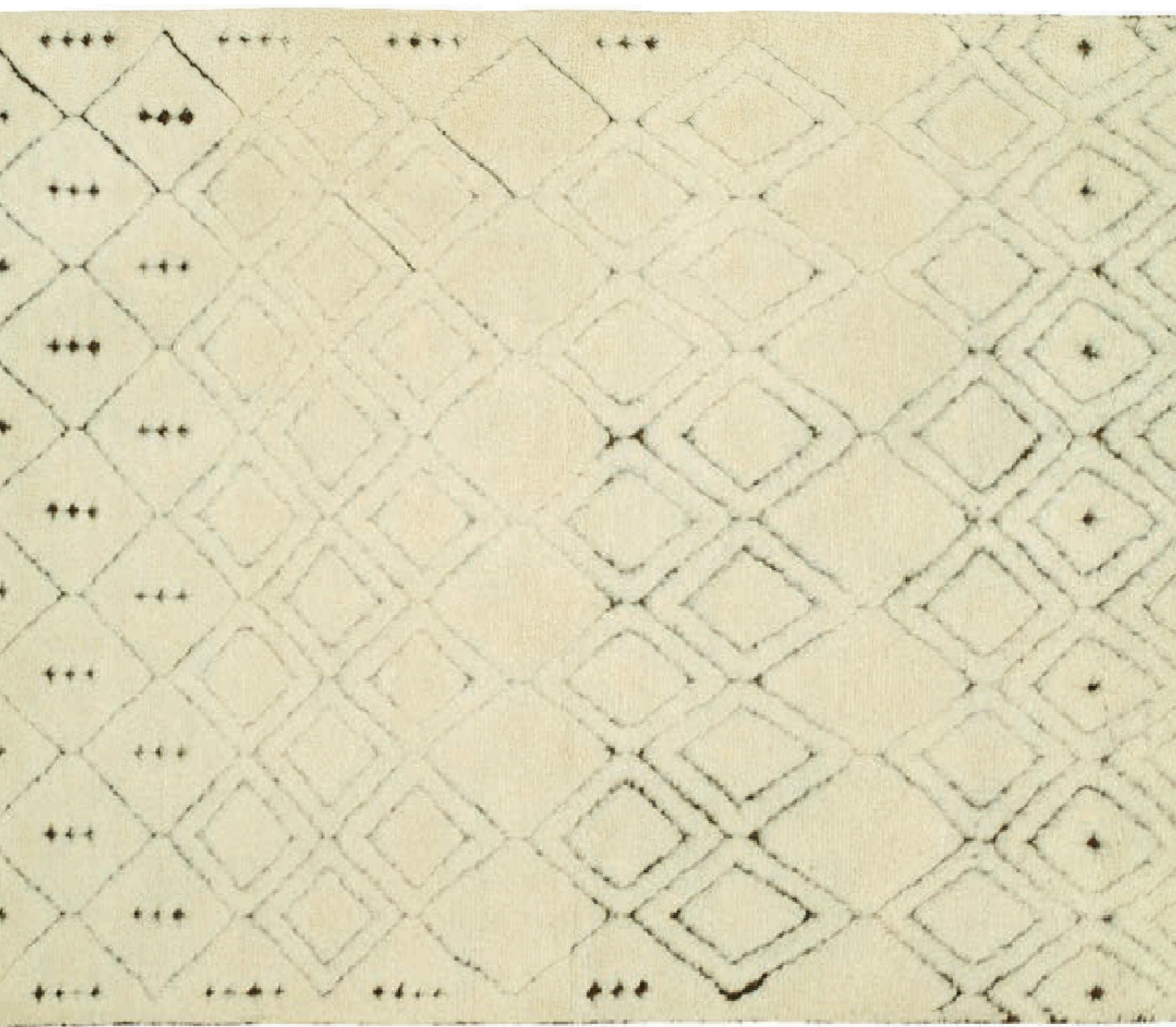
IVORY

# Evander

---

A tone-on-tone ivory field where the weave pattern itself becomes the ornament — a restful geometric rhythm emerging from the depth of the pile. Entirely natural in fibre and feeling.

MATERIALS     100% Wool  
ORIGIN         Bhadohi, India  
SIZES            5'x8' · 7'9"×9'9" · 8'9"×11'9" · 9'9"×13'9" · Custom



IVORY

# Atlas

---

Fine handspun wool in a near-white field, the high-pile surface carrying a bold diamond repeat. A rug of elemental simplicity — designed for rooms where texture does all the work.

|           |                                                      |
|-----------|------------------------------------------------------|
| MATERIALS | 100% Wool                                            |
| ORIGIN    | Bhadohi, India                                       |
| SIZES     | 5'x8' · 7'9"×9'9" · 8'9"×11'9" · 9'9"×13'9" · Custom |



GREY

# Orion

---

A deep stone-grey field worked in a high-low Moroccan chevron — organic, tactile, and resolutely of the present moment. The dense pile absorbs sound as readily as it draws the eye.

MATERIALS     100% Wool  
ORIGIN         Bhadohi, India  
SIZES            5'x8' · 7'9"×9'9" · 8'9"×11'9" · 9'9"×13'9" · Custom



IVORY / BEIGE

# Castor

---

A warm ivory-ground Peshawar with an all-over botanical field in honeyed beige — open, unhurried, and thoroughly at ease. The traditional Afghan vocabulary translated into something lighter.

MATERIALS      100% Wool  
ORIGIN            Bhadohi, India  
SIZES              6'×9' · 8'×10' · 9'×12' · 10'×14' · 12'×15' · Custom



LIGHT BLUE / IVORY

# Lysander

---

A sea-haze ground washed in pale blue, its Peshawar flora rendered in ivory and sage against the misty field. The vegetable-dye palette gives this piece a faded, timeless quality.

MATERIALS      100% Wool  
ORIGIN            Bhadohi, India  
SIZES              6'×9' · 8'×10' · 9'×12' · 10'×14' · 12'×15' · Custom



LIGHT GREEN / IVORY

# Cyrus

---

Soft celadon-ivory ground with a distressed allover botanical — the Peshawar weave at its most restrained. An ideal companion for interiors of oak, linen, and pale plaster.

|           |                                                                |
|-----------|----------------------------------------------------------------|
| MATERIALS | 100% Wool                                                      |
| ORIGIN    | Bhadohi, India                                                 |
| SIZES     | 6'×9' · 8'×10' · 9'×12' · 10'×14' · 12'×15' · 12'×18' · Custom |



BEIGE / RUST

# Linus

---

A sand-beige ground with rust and ochre botanical ornament — the Peshawar tradition expressed in the warmest of earth tones. The worn quality of the palette suggests an antique provenance.

MATERIALS      100% Wool  
ORIGIN            Bhadohi, India  
SIZES              6'×9' · 8'×10' · 9'×12' · 10'×14' · 12'×15' · 12'×18' · Custom



RED / IVORY

# Alcyon

---

A terracotta-red Serapi field framed by a wide ivory border, its angular star medallion carrying the geometric authority that defines this ancient design tradition.

MATERIALS      100% Wool  
ORIGIN            Bhadohi, India  
SIZES              6'×9' · 8'×10' · 9'×12' · 10'×14' · Custom



RUST / RUST

# Delphi

---

A monumental Serapi in deep rust, its bold medallion and angular field ornament rendered in a single warm register — as if drawn from the earth itself and never changed.

MATERIALS      100% Wool

ORIGIN            Bhadohi, India

SIZES              6'×9' · 8'×10' · 9'×12' · 10'×14' · Custom



IVORY / RUST

# Mycenae

---

A pale ivory Serapi field with star medallion in rust and navy — a lighter interpretation of the Heritage design, where the ground opens up and the ornament seems to float.

MATERIALS 100% Wool

ORIGIN Bhadohi, India

SIZES 6'×9' · 8'×10' · 9'×12' · 10'×14' · Custom



IVORY / RUST

# Knossos

---

A cream-ground Serapi Heritage with a central medallion in rust and charcoal — its all-over corner spandrels completing a composition of classical balance and warmth.

|           |                                            |
|-----------|--------------------------------------------|
| MATERIALS | 100% Wool                                  |
| ORIGIN    | Bhadohi, India                             |
| SIZES     | 6'×9' · 8'×10' · 9'×12' · 10'×14' · Custom |

SINCE  
RS  
1927  
RAHEEM & SON  
HANDMADE RUGS

---

## Raheem & Son

Bazaar Sardar Khan, Chauri Road

Bhadohi, 221401, India

HANDMADE RUGS · SINCE 1927